

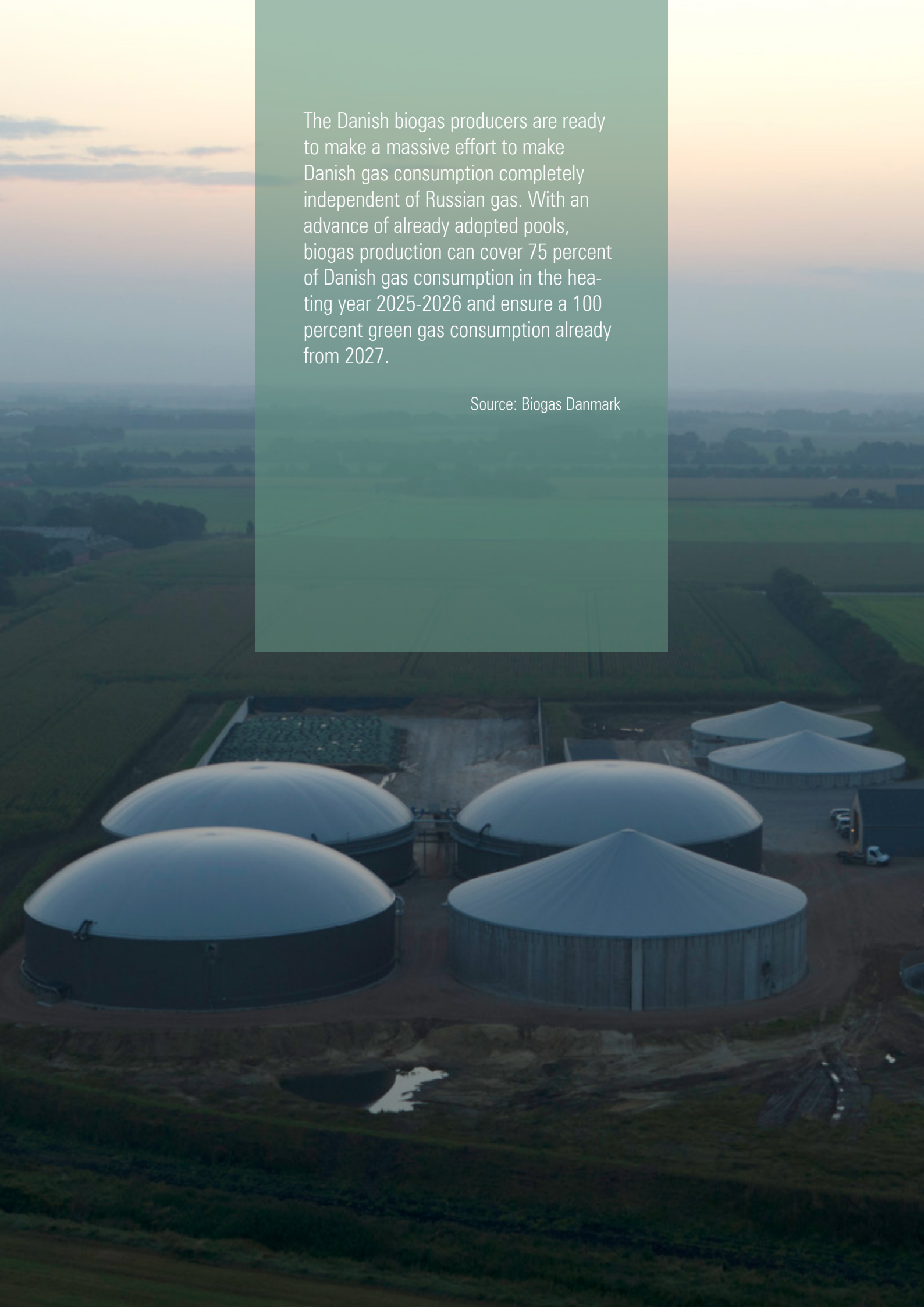
WE HAVE GREAT EXPERIENCE IN TECHNICAL ADVICE AND SALES OF PRODUCTS FOR BIOGAS PLANTS

Concepts for flow technology



The Danish biogas producers are ready to make a massive effort to make Danish gas consumption completely independent of Russian gas. With an advance of already adopted pools, biogas production can cover 75 percent of Danish gas consumption in the heating year 2025-2026 and ensure a 100 percent green gas consumption already from 2027.

Source: Biogas Danmark



BIOGAS

BIOGAS PLANTS HELP TO SOLVE THE CLIMATE CHALLENGES

Biogas must contribute to general security of energy supply, be back-up and ensure the necessary flexibility in both electricity and heat supply.

Armatec / DVC are specialists in valve solutions for biogas applications with over 20 years of experience.

CLIMATE-SMART FLOW TECHNOLOGY

WE HAVE AN AMBITION TO CONTRIBUTE TO A SUSTAINABLE SOCIETY.

We spend a lot of resources on finding and developing sustainable technical solutions for construction and industry.

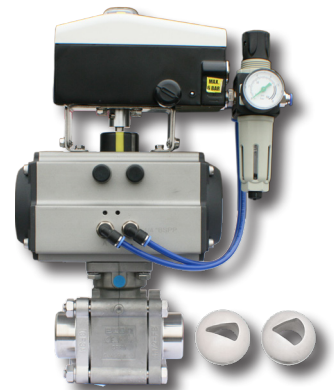
Our environmental responsibility is high on our agenda, and we always strive to ensure minimal negative environmental impact. This means that we always consider environmental aspects when choosing suppliers and purchasing new products.

Together with our customers, we select products from a strong life cycle perspective and find smart technical and digital solutions.

SHUT-OFF VALVES

The choice of shut-off valve depends on various factors such as the pipe dimension, pressure, temperature, requirements for leakage rate and the nature of the medium.

For most shut-off tasks, a ball valve, butterfly valve or knife gate valve will be the obvious choice. For more extreme tasks, such as shutdown of biomass, our special variants of knife gate valves come into play. They are precisely adapted to the demanding media and environment associated with biogas plants. We can of course deliver with e.g. C4 coating according to your wishes.



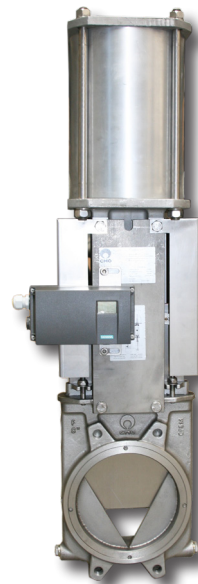
CONTROL VALVES

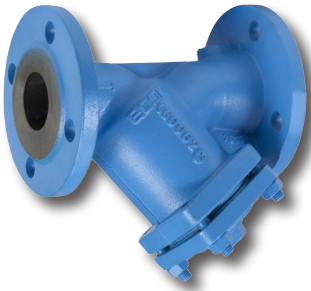
Control valve is used when you want to adapt a certain pressure or flow to the current process.

The control valves are often with electric or pneumatic actuator incl. positioner but can also be with manual operation in the form of handles or handwheel gears.

Control valves are used e.g. in gas upgrade plants.

- Globe valves
- Segment ball valves
- V-port ball valves
- V-port knife gate valves





ACTUATORS


Valve automation is done by fitting an actuator, typically an electric or a pneumatic operated actuator is selected.

The choice of actuator is determined by the desired function; regulation / on-off, torque, available space, speed and if necessary, any requirements for function in the event of a supply failure.

ACCESSORIES

Various components can be built on the valve, thereby upgrading the function of the valve to meet the specific need; stem extensions, heating jackets, solenoid valves, position feedback, positioner, speed control and filter regulator.

For the pipe system, in addition to valves, we can offer strainers, compensators, check valves, safety valves, etc.



Realization of the biogas potential in manure, which helps to reduce the climate impact of food production, requires the incorporation of other biomasses. At the same time, waste and residual products from industry, agriculture and households as well as a limited amount of energy crops are therefore degassed. Waste from industry and households is expected to be fully utilized for biogas as early as 2023. Therefore, the increase in biogas production in the years up to 2030 is expected to be based on increased utilization of other residual biomasses fed to manure-based biogas plants. It will primarily be deep litter, green residual biomasses from agriculture and straw.

Source: Biogas Danmark

KNOW-HOW

We believe that it is knowledge combined with good products that makes the difference and many of our employees have a long history in the valve business within various segments such as water, district heating and biogas. Precisely this deep knowledge of the applications in which the valves must work is something that our customers greatly appreciate. This ensures them the optimal solution!

DOCUMENTATION

We work in various areas such as food and marine and are used to working with certificates and documentation. We see the documentation in the form of data sheets, operation and maintenance instructions as well as 3D files as a natural part of our delivery and on DVC products you can freely download them directly from our website.

PROJECT MANAGEMENT

At Armatec, we experience that the world becomes more complex and the schedules become shorter, so we are constantly working to have a tight project management in relation to our customer orders. This means that we strive to have a large and comprehensive stock and constantly try to optimize the delivery times from our suppliers.

At the same time, we are used to handling larger projects in our shipment also when it means special requirements for packaging, packaging in batch and with tag numbering.

It should be easy to get on with a shipment from us.

REFERENCES

Our DVC products have been involved from the start in the biogas sector and are installed at some of the country's largest plants. The close cooperation with some of the major players in the market has given us experience and knowledge of the importance of robust valves. This means that we have continuously optimized our solution, among other things in collaboration with our customers - because we want to be remembered for reliability and long product lifetime also in the demanding processes.

ALSO REMEMBER TO ASK US ABOUT:



Denmark's largest valve stock

Armatec Denmark consists of Armatec in Glostrup and DVC, which is based in Vejle. We have been in the valve industry for decades and are part of Scandinavia's leading valve group - Armatec Group with headquarters in Sweden.

Our brand is well-known European valve brands combined with our own competitive DVC brands and this ensures you - together with our many years of know-how and application knowledge - good advice regarding valve selection and an optimal solution.

We are more than 55 employees in Denmark and have Denmark's largest valve stock and workshop in our two locations.

Our service department renovates i.a. safety valves - either in the workshop or at your place.

DVC - Armatec A/S

Ferrarivej 14
DK-7100 Vejle
Denmark
Tlf.: +45 75 72 33 00
E-mail: mail@dvcas.dk
Web: www.dvcas.dk

Armatec A/S

Mjølnersvej 4-8
DK-2600 Glostrup
Denmark
Tlf.: +45 46 96 00 00
E-mail: armatec@armatec.dk
Web: www.armatec.dk

Contacts:

Flemming Stig Hansen
Business Manager
Tlf: +45 24 76 39 70
E-mail: fsh@dvcas.dk

Bruno Pedersen
Salgsingeniør
Tlf: 40 93 40 91
E-mail: bp@armatec.dk

Lisbeth Serup
Intern salg
Tlf: +45 76 40 80 58
E-mail: ls@dvcas.dk

UK-08-22-REV.A

