

Pneumatiske slangeventiler serie VMP-Compact Air operated Pinch Valves of VMP-Compact Series



DN10 - DN15



DN20 - DN25



DN32 - DN50

Pålidelig og billig!

Den kompakte armaturløsning for en automatisk spærring mod støv, pulver, granulat, trævlede produkter, suspensioner osv.

Fordele:

- Ekstrem kompakt
- Egenvægt reduceret op til 25%
- Fødevarebestandig
- Eksplosionssikret udførelse
- Fremragende vejrbestandighed
- 100% fri produktgennemløb
- Ingen tilstoppelse
- Optimal tætning
- Enkel udskiftning af manchetten

Reliable and cost-effective!

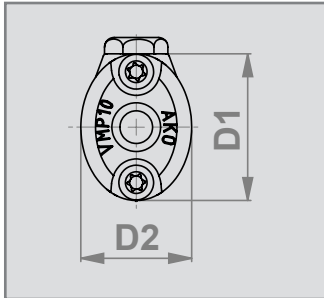
The compact valve solution for the shut off. For example dust, granule, powder, suspension, sewage, air venting etc.

Advantages:

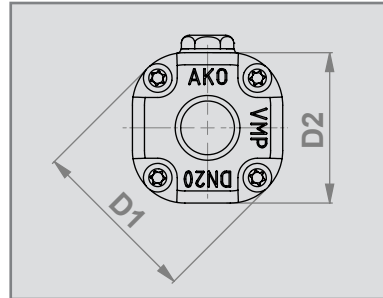
- Extremely compact
- Weight reduced by 25%
- Suitable for food applications
- Explosion protected design
- Excellent weather resistance
- Complete free passage
- No plugging
- 100% tight shut off
- Easy maintenance and re-sleeving

Pneumatiske slangeventiler - Indvendig gevindtilslutning

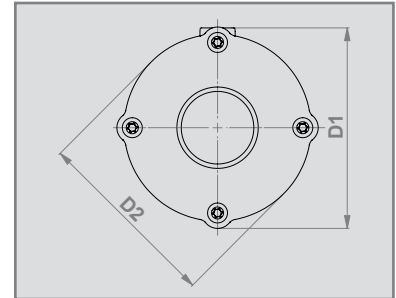
Air operated Pinch Valves - Internal Thread Connection



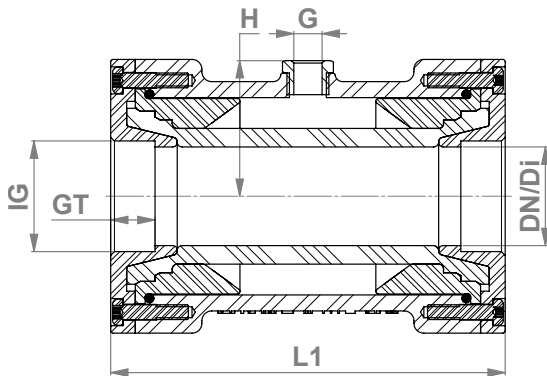
DN10 - DN15



DN20 - DN25



DN32 - DN50



Industrielle områder:

Pneumatiske transportsystemer / pigment- / granulatbehandling / keramik-/glas-/plastindustri / farma-/fødevarerindustrien / ud-sugningsanlæg / doseringsanlæg / påfyldnings- og vejjeanlæg / be- og afluftningssystemer

Industrial areas:

Pneumatic conveying systems / pigments and granules / ceramics/glass/plastic industry / pharmaceutical/food industry / extraction systems / dosing systems / filling and weighing systems / air venting systems

DN/Di (mm)	IG (inch)	GT (mm)	L1 (mm)	D1 (mm)	D2 (mm)	G (inch)	H (mm)	PS max. (bar)	Skruer screws	Volumen (ml)* volume (ml)* (ca./approx.)	Vægt** weight** (kg)
10	G $\frac{3}{8}$ "	12	80	45	34	G $\frac{1}{8}$ "	27,5	6,0	4	15	0,12
15	G $\frac{1}{2}$ "	14	95	55	46	G $\frac{1}{8}$ "	32,5	6,0	4	25	0,31
20	G $\frac{3}{4}$ "	17	103	63	56	G $\frac{1}{8}$ "	34,5	6,0	8	40	0,31
25	G1"	17	120	75	70	G $\frac{1}{8}$ "	40,0	6,0	8	80	0,50
32	G1 $\frac{1}{4}$ "	18	135	98	90	G $\frac{1}{4}$ "	48,0	4,5	8	150	0,66
40	G1 $\frac{1}{2}$ "	18	160	111	103	G $\frac{1}{4}$ "	55,0	4,5	8	300	0,97
50	G2"	24	170	130	120	G $\frac{1}{4}$ "	64,0	4,0	12	450	1,50

* Volumen = styremediets volumen ved lukket manchet / Volume = Control volume with closed sleeve

** Vægt på VMP ventil med rustfritståldæksel: DN10=0,3 / DN15=0,4kg / weight for VMP valves w/stainless steel socket: DN10=0,3 / DN15=0,4kg

Tilslutningstype:

Indvendigt gevind (DIN ISO 228) eller NPT, andre på forespørgsel


Connection type:

Internal Thread (DIN ISO 228) or NPT, others on request.

Råmaterialer / materialer:

POM naturfarvet fødevarerbestandig

POM sort fremragende vejrbestandighed

POM ledende for eksplosionstruede områder 

*** I nominelle bredder DN10+15 kan der også leveres et muffedæksel i rustfrit stål (1.4404).


Manschetter:

Slidstærk naturgummi (NR), NR fødevarer, EPDM, NBR, CSM, IIR, CR (neopren), andre på forespørgsel.

Body / socket ends***

POM natural white FDA approved

POM black excellent weather resistance

POM conductive for areas at risk of explosions 

***Stainless steel (1.4404) socket end covers available in nominal diameter 10+15.

Sleeves:

Natural rubber (NR) anti-abrasive, NR food quality, EPDM, NBR, CSM, IIR, CR (neoprene), others on request.

Ret til tekniske ændringer forbeholdes.

Technical details subject to change without notice.

AKO Armaturen & Separationstechnik GmbH

D-65468 Trebur-Astheim • Adam-Opel-Str. 5 • Telefon/Phone: +49 (0) 61 47-9159-0 • Fax: +49 (0) 61 47-9159-59
E-Mail: ako@slangeventiler.dk • Internet: www.slangeventiler.dk / www.pinch-valve.com