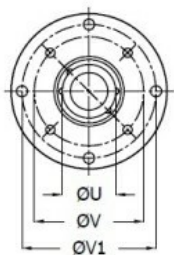
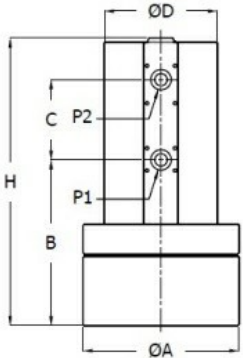
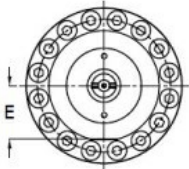


Fig. 21204 Hydraulic actuator for valve



econ®



Features

- Transmission: Quarter turn
- Control pressure: 135 bar
- Body material: 1.0503
- Driving: Hydraulic
- Active principle: Double-acting
- Standard flange attachment: ISO 5211
- Material shaft: 1.0503
- Maximum angle of rotation [°]: 90

Pressure and Temp Range

Temperature
-19 to + 75 °C

Dimensions

Type	A	B	C	D	E	H	U	V	V1	P1/P2	Torque Nm
	[mm]										
								ISO 5211			
EDH-1	115	110	44	80	37	200	30	F05	F07	G 1/4"	125
EDH-2	130	124	54	90	42,5	214	40	F07	F10	G 1/4"	280
EDH-3	145	155	75	105	50	271	50	F10	F12	G 1/4"	525
EDH-4	165	191	82	122	59	316	60	F12	F14	G 1/4"	1090
EDH-5	210	213	99	147	71	358	80	F14	F16	G 1/4"	1980
EDH-6	285	282	115	187	92	451	95	F16	F25	G 1/4"	4050
EDH-7	285	335	142	210	103	535	115	F16	F25	G 1/4"	8100
EDH-8	365	420	165	250	124	650	153	F25	F30	G 1/4"	16200

The insert have to ordered separately. It is depending on the shaft dimensions of the valve

Order Information

Stock	Article No.	Order code	Torque [Nm]	Dimension	Size flange attachment
S	EC21204GA1B01CAA000	716777	125	EDH-1	F05/F07
S	EC21204GA2B01CAA000	716778	280	EDH-2	F07/F10
S	EC21204GA3B01CAA000	716779	525	EDH-3	F10/F12
S	EC21204GA4B01CAA000	716780	1090	EDH-4	F12/F14
	EC21204GA5B01CAA000	716781	1980	EDH-5	F14/F16
	EC21204GA6B01CAA000	716782	4050	EDH-6	F16/F25
	EC21204GA7B01CAA000	716783	8100	EDH-7	F16/F25
	EC21204GA8B01CAA000	716784	16200	EDH-8	F25/F30