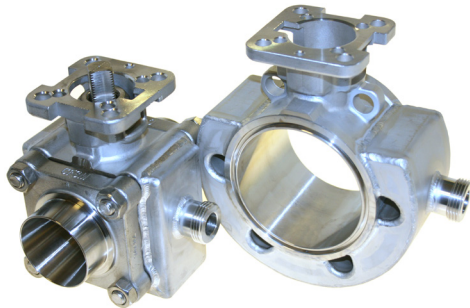


3-PC BALL VALVE WITH HEATING JACKET

TYPE 1311: STAINLESS STEEL



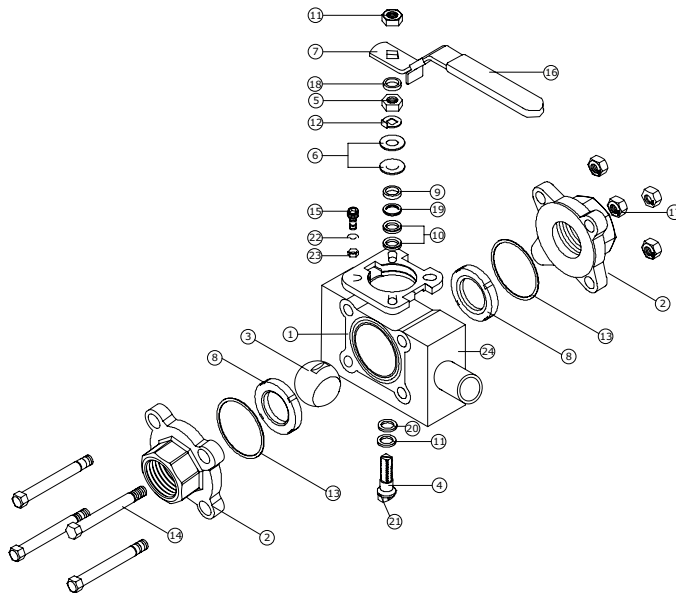
GENERAL

SIZE/PRESSURE: 1/4" - 1" FB = 125 BAR
 1 1/4" - 2" FB = 100 BAR
 2 1/2" - 4" FB = 69 BAR
 (DEPENDS ON PACKING MATERIAL AND TEMPERATURE)

MATERIAL: AISI 316 / AISI 316L
 HEATING JACKET: AISI 304, 3/4" NIPPEL
 ISO TOP FLANGE: ISO 5211
 THREAD ENDS: BSPP - DIN259
 BUTT WELD ENDS: TYPE 1311 - DIN 2463 / ISO 1127 LINE 1

OPTION

EDITION: FIRE SAFE API 607 AND BS 6755
 CONNECTION: VARIOUS. BSPT, BS 21, NPT, ANSI B 2.1, JISPT, SOCKET WELD ENDS ANSI B 16.11
 SEAT/PACKING: PEEK, 50%SS/PTFE, DELRIN
 *FDA (PTFE+GLASFIBER / PTFE)



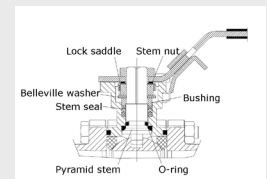
POS	DESCRIPTION	MATERIAL
1	BODY	STAINLESS STEEL CF8M
2	CONNECTION	STAINLESS STEEL CF3M / CF8M (THREAD)
3	BALL	STAINLESS STEEL CF8M
4	STEM	STAINLESS STEEL AISI 316
5	STEM NUT	STAINLESS STEEL AISI 304
6	BELLEVILLE WASHER	STAINLESS STEEL AISI 301
7	HANDLE	STAINLESS STEEL AISI 304
8	SEAT PACKING	PTFE WITH 25% CARBON
9	GLAND	STAINLESS STEEL AISI 304
10	STEM SEAL	PTFE WITH 25% CARBON
11	PYRAMID SEGMENT	PTFE WITH 25% CARBON
12	LOCK SADDLE	STAINLESS STEEL AISI 304
13	JOINT GASKET	PTFE
14	BOLT	STAINLESS STEEL AISI 304
15	STOP BOLT	STAINLESS STEEL AISI 304
16	HANDLE SLEEVE	VINYL
17	NUT	STAINLESS STEEL AISI 304
18	WASHER	STAINLESS STEEL AISI 304
19	BUSHING	75% PTFE/20% GLASFIBRE/5% GRAPHITE
20	O-RING	FPM
21	ANTI-STATIC DEVICE	STAINLESS STEEL AISI 304
22	WASHER	STAINLESS STEEL AISI 304
23	NUT	STAINLESS STEEL AISI 304
24	HEATING JACKET	STAINLESS STEEL AISI 304

≥DN65FB includes backup for seat ring in stainless steel

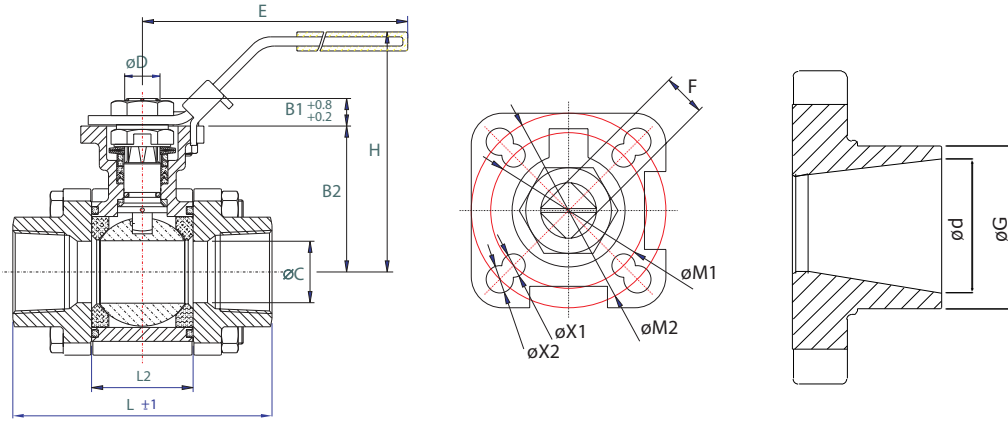
DESCRIPTION

- **Solid ball valve for high performance tasks.** All ball valves are CE/Atex approved and pressure tested. Can on demand be delivered with certificate DIN 50049/3.1.B certificate.
- **Bold circle diameter and face to face dimensions** of the body is equal to Worcester, Valtac and Mecafrance from DN15 to DN65. This means that our Type 1311 can be mounted between existing end caps.
- **PTFE with 25% carbonfill** are used for seats and pyramid segment. This material is very suitable for high pressure and temperature and it's even more resistant to wear than traditional PTFE.
- **ISO 5211 flange** and stem makes it simple and easy to mount an actuator without bracket and coupling. A compact solution with less connections = less slack. Can also be mounted with bracket or TSM unit.

- **Antistatic stem with pyramid segment.** Stem with 45° face of contact. This means larger contact area together with reinforced stem seat and a surface quality on Ra 0.2 ~ 0.3 um. These advantages provides the possibility of a very long lifetime.
- **Maintenance free stuffing box** with belleville washers, reinforced V-rings and FPM O-ring will provide optimum packing and longer lifetime - also at various temperatures.
- **Stainless steel butt weld caps according to ISO 1127** is standard. From stock we can also deliver butt weld caps according to SMS 3008.
- **Approvals:** TA-Luft, FDA, EC1935, ATEX, SIL3, TR TS 032/2013, 012/2011, 010/2011.



DIMENSIONS



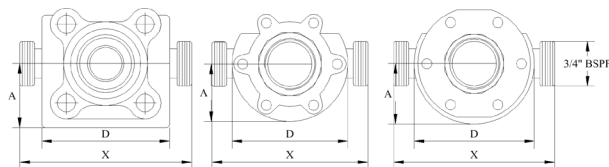
DIMENSION [MM]	VALVE WITH HANDLE									ISO TOP FLANGE				STEM			
	L [MM]				L2	B2	ØC	E	H	ISO 5211	ØM1	ØX1X4	ISO 5211	ØM2	ØX2X4	F	B1
	THREAD	BW	SMS	FLANGE	[MM]	[MM]	[MM]	[MM]	[MM]		[MM]	[MM]	[MM]	[MM]	[MM]	[MM]	[MM]
DN08FB	75.0	75.0	75.0	-	24.5	42.6	11.5	139	77.0	F03	36	6.0	F04	42	6.0	9	7.6
DN10FB/DN15RB	75.0	75.0	75.0	-	24.5	42.6	12.6	139	77.0	F03	36	6.0	F04	42	6.0	9	7.6
DN15FB/DN20RB	72.5	75.0	75.0	130	24.5	42.6	15.0	139	77.0	F03	36	6.0	F04	42	6.0	9	7.6
DN20FB/DN25RB	85.4	90.0	90.0	150	31.4	46.9	20.0	139	82.0	F03	36	6.0	F04	42	6.0	9	8.6
DN25FB/DN32RB	105.3	110.0	110.0	160	41.3	59.3	25.0	165	98.5	F04	42	6.0	F05	50	7.0	11	10.4
DN32FB/DN40RB	111.0	115.0	115.0	180	48.4	62.6	32.0	165	102.0	F04	42	6.0	F05	50	7.0	11	10.4
DN40FB/DN50RB	127.3	129.6	129.6	200	56.3	79.0	38.0	215	128.0	F05	50	7.5	F07	70	9.0	14	13.4
DN50FB/DN65RB	145.0	145.0	145.0	230	71.4	87.7	50.0	215	137.0	F05	50	7.5	F07	70	9.0	14	13.4
DN65FB/DN80RB	185.0	185.0	185.0	290	86.6	108.7	65.0	262	167.0	F07	70	10.0	F10	102	12.0	17	16.8
DN80FB/DN100RB	205.0	205.0	205.0	310	99.0	117.7	76.0	262	176.0	F07	70	10.0	F10	102	12.0	17	17.8
DN 100FB	240.0	240.0	240.0	350	127.0	133.7	100	312	192.0	F07	70	10.0	F10	102	12.0	17	16.8

DIMENSION		*) TORQUE		WEIGHT		KV-VALUE		BUTT WELD ENDS			HEATING JACKET			
[MM]	[INCH]	RB [NM]	FB [NM]	RB [KG]	FB [KG]	FB 90° M³/H		ISO 1127		SMS3008 (RB)	A [MM] FB		D [MM] FB	X [MM] FB
								ØG / MM		ØG / MM	TOL. +/- 1,5	TOL. +/- 1,0	TOL. +/- 1,0	
DN10	3/8"	-	10.8	-	0.80	6.9		17.2 X 1.6	F	12.0 X 1.0	F	-	-	-
DN15	1/2"	10.8	10.8	0.84	0.82	12.7		21.3 X 1.6	F	18.0 X 1.0	F	32.5	67.0	88.0
DN20	3/4"	10.8	14.4	0.85	1.27	29.2		26.9 X 1.6	R/F	25.0 X 1.2	R	38.5	77.0	100.0
DN25	1"	14.4	20.4	1.32	2.00	48.1		33.7 X 2.0	R/F	32.0 X 1.2	R/F	40.0	80.0	103.0
DN32	1 1/4"	20.4	31.2	2.09	2.75	73.1		42.4 X 2.0	R/F	33.7 X 1.2	R	45.5	91.0	114.0
DN40	1 1/2"	31.2	42.0	2.80	4.28	107.5		48.3 X 2.0	R/F	38.0 X 1.2	R	52.0	104.0	127.0
DN50	2"	42.0	58.8	4.44	6.93	215.0		60.3 X 2.0	R/F	51.0 X 1.2	R	75.0	150.0	176.0
DN65	2 1/2"	58.8	81.6	6.94	12.12	275.2		76.1 X 2.6	R/F	63.5 X 1.6	R	95.0	190.0	216.0
DN80	3"	81.6	121.2	12.75	16.20	498.8		88.9 X 2.6	R/F	76.1 X 1.6	R	107.5	215.0	241.0
DN100	4"	121.2	136.8	17.40	25.80	877.0		114.3 X 2.6	R/F	101.6 X 2.0	R	127.0	254.0	294.0

*) Torque figure includes 30% safety factor.

When dimensioning the actuator following must be added:

- + 15% if dry air or demineralized water.
- + 30% if sludge or abrasive medias.
- 15% if lubricating medias.



DN 15-40FB DN 50FB DN 65-100FB

PRESSURE/TEMPERATURE

