

3-PCS BALL VALVE - FULL BORE

TYPE E7444

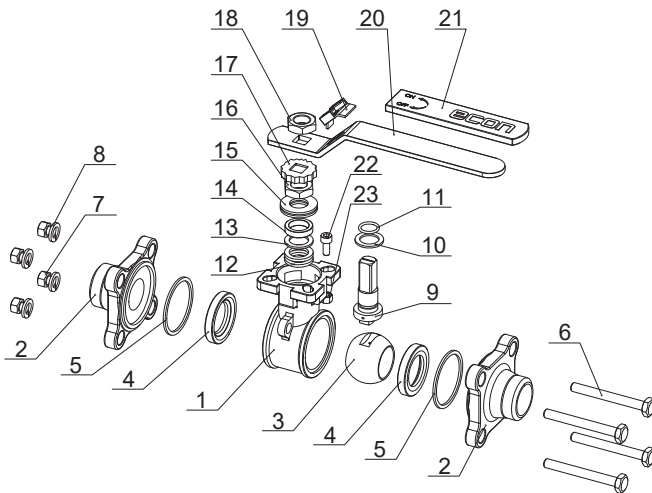


GENERAL

DIMENSION:	1/2" - 2 1/2"
PRESSURE:	68 BAR / 1000 PSI WOG
TEMPERATUR:	-29°C TO 204°C
(PRESSURE AND TEMPERATURE ARE INTERDEPENDENT)	
ISO TOP FLANGE:	ISO 5211
THREAD ENDS:	BSPP

OPTION

DIMENSION:	1/4" - 3/8", 3" - 4"
MATERIAL:	STEEL

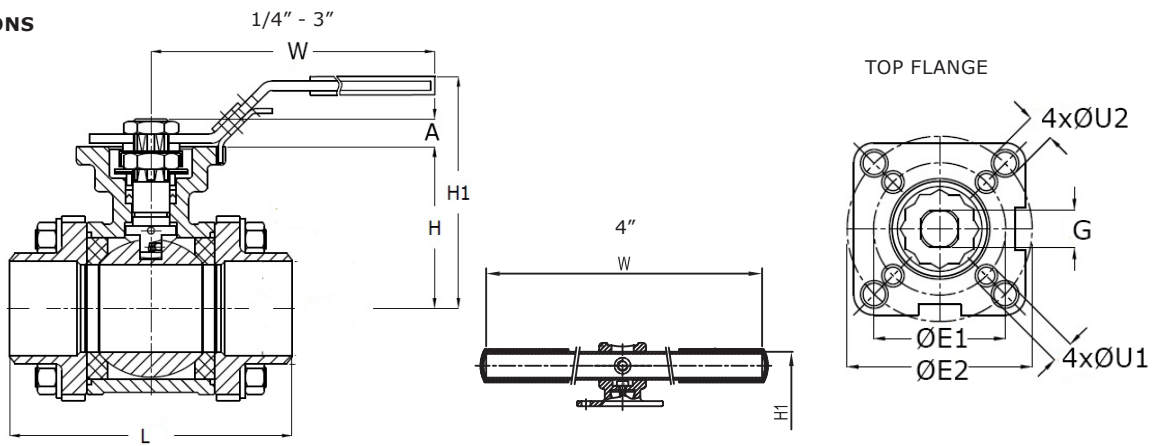


POS	DESCRIPTION	MATERIAL
1	BODY	STAINLESS STEEL CF8M
2	CAP	STAINLESS STEEL CF8M
3	BALL	STAINLESS STEEL CF8M
4	SEAT	PTFE
5	JOINT GASKET	PTFE
6	BOLT	STAINLESS STEEL AISI 304
7	NUT	STAINLESS STEEL A2-70
8	BOLT WASHER	STAINLESS STEEL AISI 304
9	STEM	STAINLESS STEEL AISI 316
10	THRUST WASHER	PTFE
11	O-RING	FPM
12	STEM PACKING	PTFE
13	BUSHING	50% SS + 50% PTFE
14	GLAND	STAINLESS STEEL AISI 316
15	BELLEVILLE WASHER	STAINLESS STEEL AISI 301
16	STEM NUT	STAINLESS STEEL AISI 304
17	STOP LOCK CAP	STAINLESS STEEL AISI 304
18	NUT	STAINLESS STEEL A194-8
19	LOCKING DEVICE	STAINLESS STEEL AISI 304
20	HANDLE	STAINLESS STEEL AISI 304
21	HANDLE SLEEVE	PVC PLASTIC
22	STOP BOLT	STAINLESS STEEL A2-70
23	STOP NUT	STAINLESS STEEL A2-70

DESCRIPTION

- **Solid industrial ball valve** in acid-proof, stainless steel CF8M. The 3-pcs. design with "build-in flanges" makes it easy to remove the valves middle part for maintenance.
- **Maintenance free stuffing box** with spring washers, PTFE V-rings and FPM O-ring provides optimum sealing and longer service life. The stuffing box will self-adjust under changing temperatures and due to wear.
- **The Blow-out proof stem**, has apart from a security function also the benefit of increasing the stem sealing when pressure rises.
- **Electric equalizer connections**, between ball, stem and body makes it possible to install this valve type in ATEX area (Group II, equipment category 2).
- **Traceability on all ball valves**, and delivery of material certificate EN 10204/3.1 on request.
- **ISO 5211 top flange** makes it simple and easy to mount an actuator without bracket and coupling. A compact solution with less connections = less slack.
- **Approvals:** TA-Luft, ATEX 2014/34/EU, EU1935 and FDA.

DIMENSIONS



DIMENSION		VALVE WITH HANDLE				ISO TOP FLANGE					STEM	
[MM]	[INCH]	L [MM]	H [MM]	H1 [MM]	W [MM]	ØE1 [MM]	ØE2 [MM]	4xØU1 [MM]	4xØU2 [MM]	ISO 5211	G [MM]	A [MM]
DN08	1/4"	75.0	42.5	72.0	147.0	36	42	6	6	F03/F04	9	9.0
DN10	3/8"	75.0	42.5	72.0	147.0	36	42	6	6	F03/F04	9	9.0
DN15	1/2"	75.0	42.5	72.0	147.0	36	42	6	6	F03/F04	9	9.0
DN20	3/4"	80.0	49.0	80.0	147.0	36	50	6	7	F03/F05	9	9.0
DN25	1"	90.0	59.0	90.0	177.0	42	50	6	7	F04/F05	11	11.0
DN32	1 1/4"	110.0	63.0	95.0	177.0	42	70	6	9	F04/F07	11	11.0
DN40	1 1/2"	120.0	71.3	106.0	197.0	50	70	7	9	F05/F07	14	14.0
DN50	2"	140.0	78.2	113.0	197.0	50	70	7	9	F05/F07	14	14.0
DN65	2 1/2"	185.5	100.0	150.0	267.0	70	102	9	11	F07/F10	17	17.0
DN80	3"	205.0	109.0	159.0	267.0	70	102	9	11	F07/F10	17	17.0
DN100	4"	240.0	140.0	212.0	400.0	-	102	-	11	F10	22	22.0

VALVE DATA

DIM		TORQUE*	WEIGHT	KV-VALUE	MAST**
[MM]	[INCH]	[NM]	[KG]	90° [m³/h]	AISI316 [NM]
DN08	1/4"	5.9	0.7	14	15
DN10	3/8"	5.9	0.7	20	15
DN15	1/2"	6.5	0.7	26	15
DN20	3/4"	7.8	0.9	47	15
DN25	1"	14.3	1.4	83	36
DN32	1 1/4"	24.7	2.1	146	36
DN40	1 1/2"	33.8	3.0	232	91
DN50	2"	49.4	4.3	404	91
DN65	2 1/2"	76.7	8.3	671	180
DN80	3"	131.3	12.3	989	180
DN100	4"	192.4	23.7	1806	354

* Torque figures include 30% safety factor. (TEST: 63bar diff. pressure, ambient temperature, non-lubricating).

** Max allowed stem torque

PRESSURE/TEMPERATURE

