

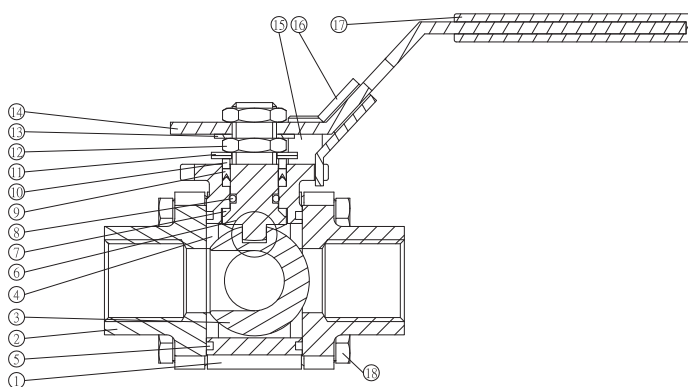
# 3-WAY BALL VALVE

## TYPE 1746: DIVERTER VALVE

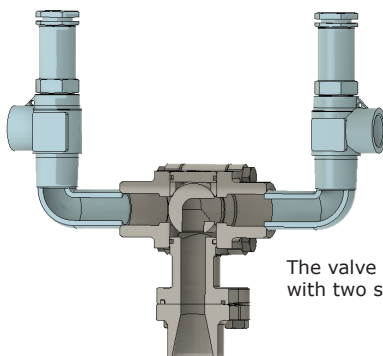


### GENEREL

DIMENSION:	1/2" FULL BORE
PRESSURE:	2000 PSI (137 BAR)
TEMPERATURE:	-10°C TO +180°C
(PRESSURE AND TEMPERATURE ARE INTERDEPENDENT)	
CONNECTION:	2 X THREAD (BSPP)
	1 X BUTT WELD END (ISO 1127)
MATERIAL:	ACID-PROOF STAINLESS STEEL
ISO TOP FLANGE:	ISO 5211



POS	DESCRIPTION	MATERIAL
1	BODY	STAINLESS STEEL CF8M
2	END CAP	STAINLESS STEEL CF8M
3	BALL	STAINLESS STEEL CF8M
4	SEAT	PTFE - TFM1600
5	JOINT GASKET	PTFE
6	STEM	STAINLESS STEEL AISI 316
7	THRUST WASHER	PTFE - TF4215
8	O-RING	FPM
9	PACKING	PTFE + 15% GRAPHITE
10	GLAND	STAINLESS STEEL AISI 304
11	BELLEVILLE WASHER	STAINLESS STEEL AISI 301
12	NUT	STAINLESS STEEL AISI 304
13	LOCK WASHER	STAINLESS STEEL AISI 304
14	HANDLE	STAINLESS STEEL AISI 304
15	STOP PIN	STAINLESS STEEL AISI 304
16	LOCKING DEVICE	STAINLESS STEEL AISI 304
17	HANDLE COVER	PLASTIC
18	BOLT	STAINLESS STEEL AISI 304



The valve is shown cut through with two safety valves mounted.

### DESCRIPTION

- **3-way change-over valve**, used to connect two safety valves to a pipe system with the use of only one pipe joint. In such a case, one safety valve can be in operation while the other is under maintenance.
- **Overlap between the ports** ensures that the pressurized pipe is always connected to atleast one safety valve.
- **Degreased for oxygen use** acc. to EN12300 and the valve is delivered in a sealed plastic bag.

### SUITABLE FOR



INDUSTRY



HEATING SYSTEM



COOLING SYSTEM

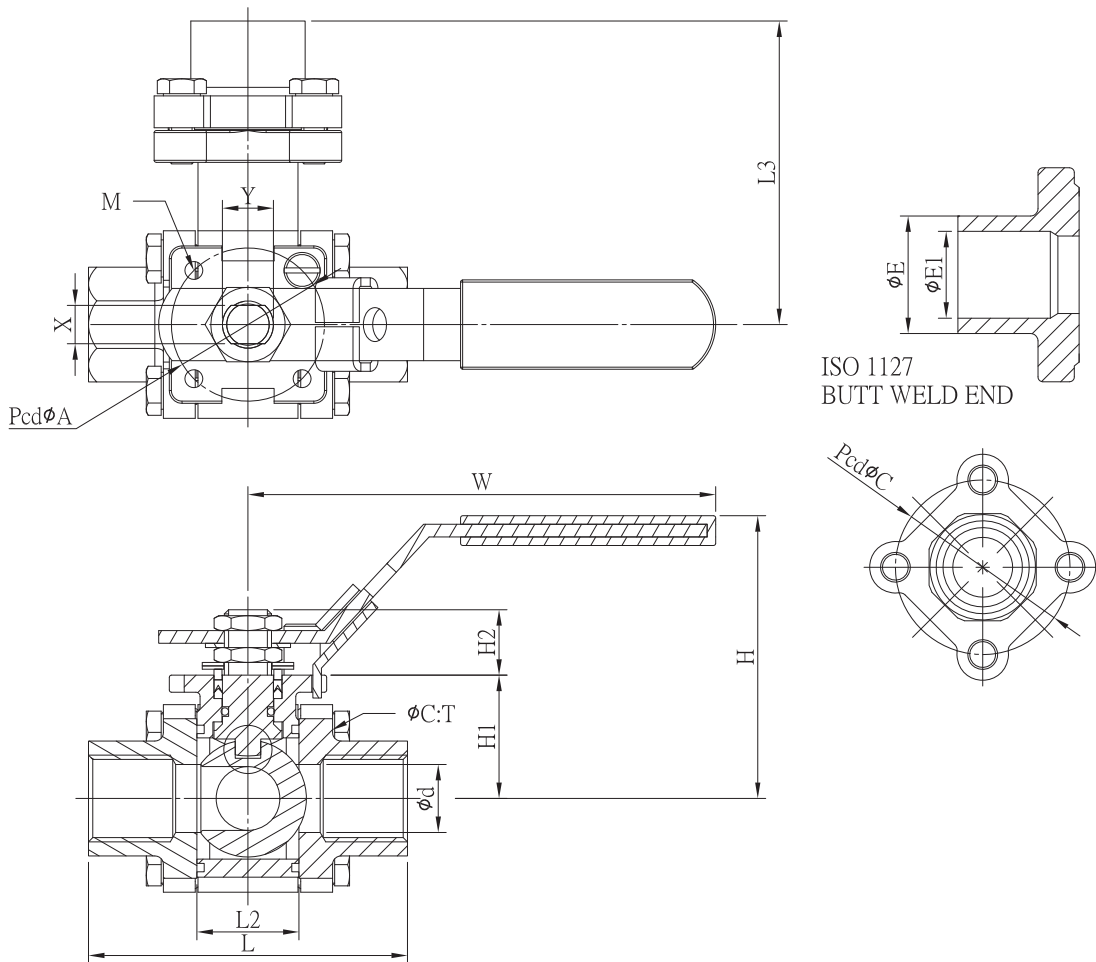


BIOGAS



FOOD

**DIMENSION**

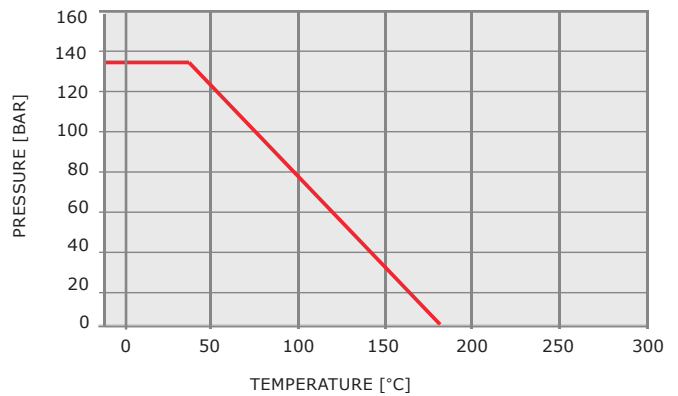


DIM	VALVE WITH HANDLE												ISO TOP FLANGE			
	[MM]															
[INCH]	ød	L	L2	L3	H	H1	H2	øE	øE1	ØC	PcdøC	W	T	ISO 5211	M	X
1/2"	16.0	75.0	24.0	71.4	66.0	29.0	15.4	26.9	23.7	6.5	44.0	117.0	M6	F03	M5x0.8	9.0

**FLOW PLANS**

PORT	1	2
TYPE		
L		

**PRESSURE/TEMPERATURE GRAPH**



**VALVE DATA**

DIM	KV-VALUE	WEIGHT
[INCH]	[M3/H]	[KG]
1/2"	5.5	0.84