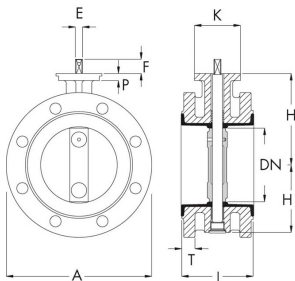
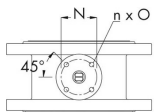


# Fig. 4630 Butterfly valve



**ECON®**



Econ® ductile iron butterfly valve, double-flanged type with centric disc, one piece shaft supported by bronze radial bearings, rubber lined body. The rubber liner is vulcanized integrally to body and bearings ensuring reduced torque and a long lifetime. This liner extends along the valve faces, eliminating the use of gaskets. The double flanged body is suitable for mounting between flanges acc. to DIN PN10 or PN16. Face to face dimensions are acc. to ISO5752/EN558 basic series 13, DIN 3202 F16 and BS 5155. Valve is also suitable for end of line applications. For easy mounting of both manual and automatic actuators the valve is executed with a topflange according to the ISO 5211 standard. Further applications of series 46 butterfly valves can be found amongst others in general industrial and maritime systems for media such as (ballast) water, gases, hydrocarbons and light corrosive media up to a maximum of 16 bar.

### Features

- housing material: Nodular cast iron
- Valve design: Centric
- Valve butterfly material: Stainless steel
- Standard: EN
- Top flange standard: ISO 5211 Direct Mount
- Surface treatment: Paint min. 60 µm
- Quality class spindle: 1.4122
- Material quality: EN-JS1030
- Connection: Flange
- Quality class disc: 1.4408
- Housing lining: Vulcanized
- Standard face to face length: EN 558, Series 13
- Spindle material: Stainless steel

### Pressure and Temp Range

Size	Liner	Pressure rating	Temperature range	Max. operating pressure	
DN50- DN600	NBR or EPDM	PN16	NBR -10°/+80°C, EPDM - 10°/+120°C	16	[bar]
DN200- DN600	NBR or EPDM	PN10	NBR -10°/+80°C, EPDM - 10°/+120°C	10	[bar]

### Dimensions

DN	A	E	F	H	H1	K	L	n x O	P	T	N	Weight	Kvs-value
[mm]											ISO 5211	[kg]	m <sup>3</sup> /hour
50	165	11	25	118	67	90	108	4x9	12	22	F07	10	70
65	185	11	25	126	74	90	112	4x9	12	22	F07	12	220
80	200	11	25	133	82	90	114	4x9	14	22	F07	14	351
100	228	11	25	147	100	90	127	4x9	14	23	F07	16	610
125	254	14	28	160	112	90	140	4x9	14	26	F07	20	1078
150	285	14	28	180	134	90	140	4x9	14	26	F07	27	1552
200	343	17	28	204	159	90	152	4x9	14	29	F07	35	2759
250	405	22	30	245	195	125	165	4x11	15	32	F10	51	4310
300	445	22	30	270	220	125	178	4x11	15	32	F10	62	6207
350	505	27	29	315	282	150	190	4x14	20	32	F12	90	11545
400	565	27	29	350	307	150	216	4x14	20	33	F12	124	13520
450	615	36	38	375	352	175	222	4x18	20	33	F14	180	15838
500	670	36	38	415	387	175	229	4x18	20	35	F14	210	24522
600	780	46	48	465	452	210	267	4x22	25	36	F16	302	34230

### Order Information

Stock	Article No.	Order code	DN	Pressure rating	Seat material	Pressure class flange
	EC4630D0050LBBC	206310	DN 50	PN 16	EPDM	PN 16
S	EC4630D0050LBAC	205930	DN 50	PN 16	NBR	PN 16

This product information sheet has been formulated with the greatest care, but no rights can be derived from it. Subject to change.

# Fig. 4630 Butterfly valve

Stock	Article No.	Order code	DN	Pressure rating	Seat material	Pressure class flange
	EC4630D0065LBBC	206312	DN 65	PN 16	EPDM	PN 16
S	EC4630D0065LBAC	205966	DN 65	PN 16	NBR	PN 16
	EC4630D0080LBBC	206316	DN 80	PN 16	EPDM	PN 16
	EC4630D0080LBAC	205971	DN 80	PN 16	NBR	PN 16
S	EC4630D0100LBBC	206327	DN 100	PN 16	EPDM	PN 16
	EC4630D0100LBAC	205973	DN 100	PN 16	NBR	PN 16
	EC4630D0125MBBC	206364	DN 125	PN 10	EPDM	PN 10
	EC4630D0125MBAC	206119	DN 125	PN 10	NBR	PN 10
	EC4630D0125LBBC	206330	DN 125	PN 16	EPDM	PN 16
	EC4630D0125LBAC	205976	DN 125	PN 16	NBR	PN 16
	EC4630D0150MBAC	206124	DN 150	PN 10	NBR	PN 10
S	EC4630D0150LBBC	206331	DN 150	PN 16	EPDM	PN 16
	EC4630D0150LBAC	205980	DN 150	PN 16	NBR	PN 16
	EC4630D0200MBBC	206372	DN 200	PN 10	EPDM	PN 10
	EC4630D0200MBAC	206130	DN 200	PN 10	NBR	PN 10
	EC4630D0200LBBC	206333	DN 200	PN 16	EPDM	PN 16
	EC4630D0200LBAC	205982	DN 200	PN 16	NBR	PN 16
	EC4630D0250MBBC	206384	DN 250	PN 10	EPDM	PN 10
	EC4630D0250MBAC	206138	DN 250	PN 10	NBR	PN 10
	EC4630D0250LBBC	206335	DN 250	PN 16	EPDM	PN 16
	EC4630D0250LBAC	205985	DN 250	PN 16	NBR	PN 16
	EC4630D0300MBBC	206387	DN 300	PN 10	EPDM	PN 10
	EC4630D0300MBAC	206145	DN 300	PN 10	NBR	PN 10
	EC4630D0300LBBC	206526	DN 300	PN 16	EPDM	PN 16
	EC4630D0350MBAC	206234	DN 350	PN 10	NBR	PN 10
	EC4630D0350LBAC	206000	DN 350	PN 16	NBR	PN 16

This product information sheet has been formulated with the greatest care, but no rights can be derived from it. Subject to change.

# Fig. 4630 Butterfly valve

Stock	Article No.	Order code	DN	Pressure rating	Seat material	Pressure class flange
	EC4630D0400MBBC	206404	DN 400	PN 10	EPDM	PN 10
	EC4630D0400MBAC	206293	DN 400	PN 10	NBR	PN 10
	EC4630D0400LBAC	206014	DN 400	PN 16	NBR	PN 16
	EC4630D0450MBBC	206407	DN 450	PN 10	EPDM	PN 10
	EC4630D0500MBBC	206411	DN 500	PN 10	EPDM	PN 10
	EC4630D0500MBAC	206317	DN 500	PN 10	NBR	PN 10
	EC4630D0500LBBC	206543	DN 500	PN 16	EPDM	PN 16
	EC4630D0600MBBC	206415	DN 600	PN 10	EPDM	PN 10

This product information sheet has been formulated with the greatest care, but no rights can be derived from it. Subject to change.