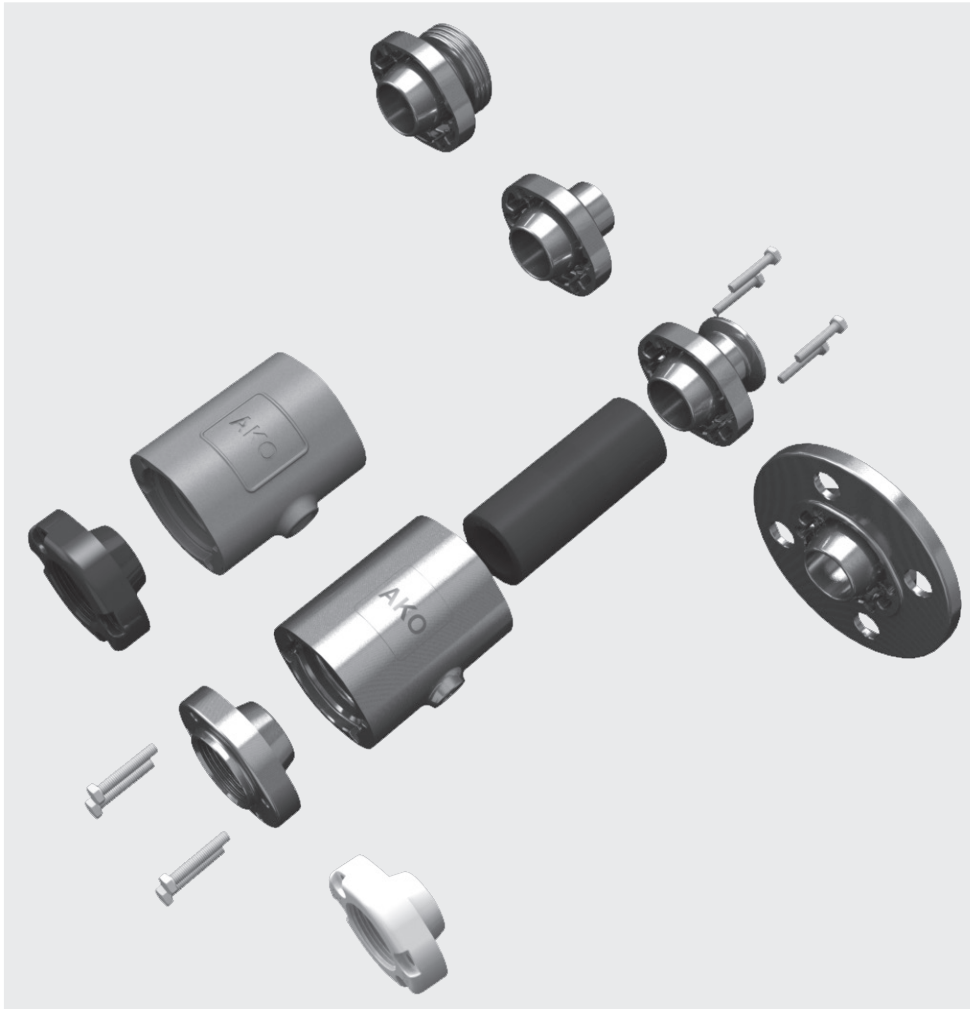


Pneumatisk slangeventil serie VMC

Air operated Pinch Valve of VMC Series



Flange/Flange



Indvendig gevind/ Internal Thread




Tri-clamp



Tilsvajningsender/ Weld-on ends




Geving studs/ Threaded spigot

 **Det fleksible modulsystem for opløselige og aseptiske rørledningsforbindelser!**

Den ideelle løsning for lukning og styring af faste stoffer af alle slags, opløsninger, pastaer, gasformede, fiberholdige og trægt flydende medier.

Fordele:

- Flexibelt modulsystem
- Diverse tilslutningsmuligheder
- Ekstrem kompakt
- Lav vægt
- 100% fri produktgennemløb
- Dødrumsfri
- Enkel udskiftning af manchetten
- Optimal tætning
- Økonomisk

 **The flexible modular system for detachable and aseptic piping connections!**

The ideal solution for isolation and regulation of solids of all kinds, suspensions, pastes, gaseous, fibrous and viscous media.

Advantages:

- Flexible modular system
- Various connection options
- Extremely compact
- Light weight
- Complete free passage
- No dead spots
- Easy maintenance and re-sleeving
- 100% tight shut off
- Competitive

Pneumatisk slangeventil serie VMC

Air operated Pinch Valve of VMC Series

Industrielle områder:

- fødevare-/ farmaindustrien
- kemisk industri
- pneumatiske transportsystemer
- pigment-/ granulatbehandling
- keramik-/ glas-/ plastindustri
- udsugningsanlæg
- doseringsanlæg
- påfyldnings- og vejelanlæg
- be- og afluftningssystemer

Tilslutningsmuligheder:

[Flangetilslutning](#)

[Indvendig gevindtilslutning G / NPT](#)

[Tri-clamp tilslutning](#)

[Tilsvejsningsender](#)

[Geving studs \(Mælkerørgevind\)](#)

[Slangetilslutning med gevind](#)

[Aseptisk/Hygienisk tilslutning](#)

Industrial areas:

- Food/ pharmaceutical/ beverage industry
- Chemical industry
- Pneumatic conveying systems
- Pigments and granules
- Ceramics/ glass/ plastic industry
- Extraction systems
- Dosing systems
- Filling and weighing systems
- Air venting systems

Connection options:

[Flange Connection](#)

[Internal Thread Connection G / NPT](#)

[Tri-Clamp](#)

[Weld-on ends](#)

[Threaded spigot \(RJT Connection\)](#)

[Threaded hose nozzle Connection](#)

[Aseptic /Hygienic Connection](#)



Specielle ledende udførelser med speciel jordforbindelse for anvendelse i Ex områder i zone 0, 1, 2, 20, 21 og 22 er også tilgængelige.



Special, conductive models with a separate grounding system, suitable for use in areas at risk of explosions (Ex) in zones 0, 1, 2, 20, 21 and 22, are also available.

De pneumatiske slangeventiler i VMC serien opfylder kravene i direktiv for apparater under tryk 97/23/EF.

The air operated Pinch Valves of VMC series fulfill all requirements of the Pressure Equipment Directive 97/23/EC.

Råmaterialer / materialer:

Hus: Rustfri stål 1.4408
Aluminium AISi10Mg
Plastic POM

Tilslutningsdæksel: Rustfri stål 1.4404
Plastic POM

Materials:

Body: Stainless steel 1.4408
Aluminum AISi10Mg
Plastic POM

Socket Connection: Stainless steel 1.4404
Plastic POM

Manchetter:

NR slidstærkt, NR levnedsmiddel, EPDM, EPDM levnedsmiddel, NBR, NBR levnedsmiddel, CSM, IIR, CR, Silikone, FPM, andre på forespørgsel.

Sleeves:

NR abrasion resistant, NR food quality, EPDM, EPDM food quality, NBR, NBR food quality, CSM, IIR, CR, Silicone, FPM / FKM, other materials on request.

Maksimal driftstryk (medietryk): ~ 6 bar

Maksimal styretryk (lukkestryk): 8 bar

Differenstryk: 2-3,5 bar

Varierer efter nominal bredde/elastomer

Ret til tekniske ændringer forbeholdes.

Operating / medium pressure max.: ~ 6 bar

Control / closing pressure max.: 8 bar

Differential pressure: 2-3.5 bar

varies depending on diameter / sleeve

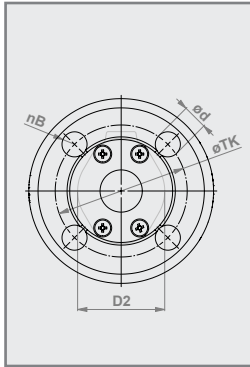
Technical details subject to change without notice.

AKO Armaturen & Separationstechnik GmbH

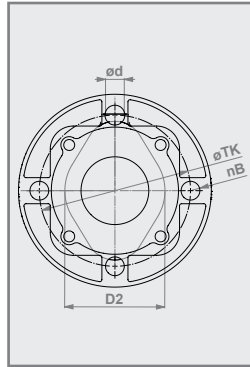
D-65468 Trebur-Astheim ▪ Adam-Opel-Str. 5 ▪ Telefon/Phone: +49 (0) 61 47-9159-0 ▪ Fax: +49 (0) 61 47-9159-59
E-Mail: ako@slangeventiler.dk ▪ Internet: www.slangeventiler.dk / www.pinch-valve.com

Pneumatisk slangeventil - Flangetilslutning (F)

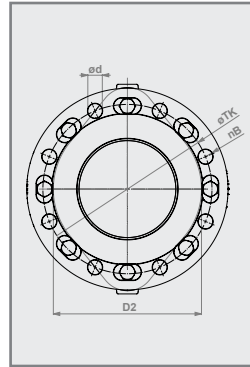
Air operated Pinch Valve - Flange (F)



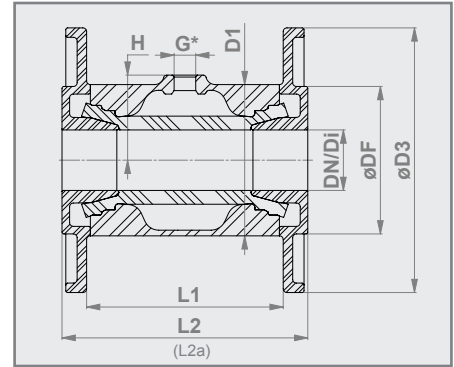
DN25 - DN50



DN65 - DN100



DN125 - DN150



Eksempelvisning / Exmpl. view (DN10 - DN50)

* DIN EN ISO 228 "G"

Tilslutningstype:

Flangetilslutning i henhold til
DIN EN 1092-1 PN 10/16

DIN 11853-2 (BF) / 11864-2 form A (BF) (L2a) på forespørgsel

Connection type:

Flange connection according to
DIN EN 1092-1 PN 10/16

DIN 11853-2 (BF) / 11864-2 form A (BF) (L2a) on request

Hus:

DN 25-150: Rustfri stål 1.4408 (E)
DN 25-100: Aluminium AlSi10Mg (A)

Body:

DN 25-150: Stainless steel 1.4408 (E)
DN 25-100: Aluminum AlSi10Mg (A)

Flange:

DN 25-150: Rustfri stål 1.4404 (E)

Flange:

DN 25-150: Stainless steel 1.4404 (E)

Ventil konstruktionslængde:

DN 25/32/65 I henhold til DIN EN 558 række 27

Valve face to face length:

DN 25/32/65: Acc. to DIN EN 558 row 27

Ventiloverflade:

Rustfri stål: Elektropoleret mat
Medieberørte dele DN10-50 = Ra 0,5 / DN65-125 = Ra 0,8
Andre på bestilling.

Valve finish:

Stainless steel: Electropolished
Wetted parts DN10-50 = Ra 0.5 / DN65-125 = Ra 0.8
Others on request.

Aluminium: Pulverlakeret 60-80µm RAL9006

Aluminum: Powder coated 60-80µm RAL9006

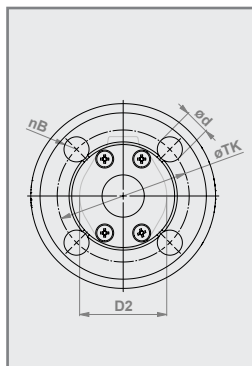
| DN / Di (mm) | D1 (mm) | D2 (mm) | ø D3 (mm) | ø DF (mm) | nB | ø d (mm) | ø TK (mm) | L1 (mm) | L2 (mm) | L2a (mm) | G (inch) | H (mm) | ¹ Vol. (l) (ca./approx.) | Vægt weight (kg) (EE) | Vægt weight (kg) (AE) |
|-----------------|------------|------------|--------------|--------------|----|-------------|--------------|------------|------------|-------------|-------------|-----------|--|-----------------------------|-----------------------------|
| 25 | 72 | 57 | 115 | 68 | 4 | 14 | 85 | 96 | 125 | 213 | G 1/8" | 37 | 0,09 | 2,4 | 1,7 |
| 32 | 80 | 66 | 140 | 78 | 4 | 18 | 100 | 104 | 130 | 226 | G 1/4" | 45 | 0,13 | 2,9 | 2,2 |
| 40 | 90 | 77 | 150 | 88 | 4 | 18 | 110 | 119 | 155 | 280 | G 1/4" | 50 | 0,22 | 4,0 | 2,8 |
| 50 | 110 | 88 | 165 | 106 | 4 | 18 | 125 | 149 | 185 | 306 | G 1/4" | 60 | 0,36 | 5,8 | 4,4 |
| 65 | 139 | 102 | 185 | 122 | 4 | 18 | 145 | 133 | 170 | 264 | G 1/4" | 74 | 0,44 | 5,5 | 4,9 |
| 80 | 173 | 126 | 200 | 138 | 4 | 18 | 160 | 173 | 213 | 306 | G 1/4" | 90 | 0,88 | 7,5 | 6,2 |
| 100 | 203 | 146 | 220 | 158 | 8 | 18 | 180 | 224 | 264 | 357 | G 1/4" | 107 | 1,80 | 14,3 | - |
| 125 | 252 | 184 | 250 | 187 | 8 | 18 | 210 | 286 | 336 | - | G 1/4" | 130 | 2,70 | 26,2 | - |
| 150 | 301 | 257 | 285 | 212 | 8 | 18 | 240 | 356 | 406 | - | G 1/4" | 155 | 6,95 | 37,1 | - |

^{*} Antal borer / Number of holes

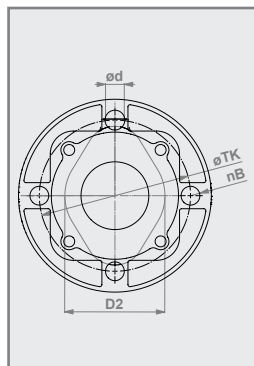
¹ Volumen = styremediets volumen ved lukket manchet / Volume = Control volume with closed sleeve

Pneumatisk slangeventil - Flangetilslutning (FA)

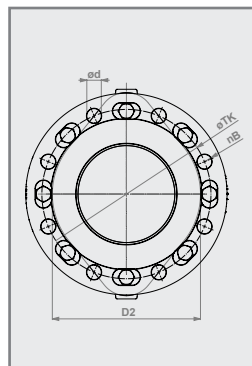
Air operated Pinch Valve - Flange (FA)



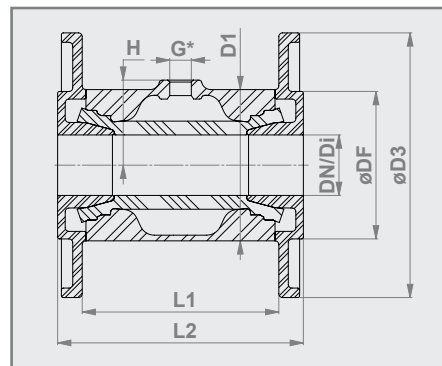
DN40 - DN50



DN65 - DN100



DN125 - DN150



Eksempelvisning / Exmpl. view (DN10 - DN50)

* ANSI/ASME B1.20.1 "NPT"

Tilslutningstype:

Flangetilslutning i henhold til
ANSI B 16.5 / 150lbs

Connection type:

Flange connection according to
ANSI B 16.5 / 150lbs

Hus:

DN 40-150: Rustfri stål 1.4408 (E)
DN 40-100: Aluminium AISi10Mg (A)

Body:

DN 40-150: Stainless steel 1.4408 (E)
DN 40-100: Aluminum AISi10Mg (A)

Flange:

DN 40-150: Rustfri stål 1.4408 (E)
DN 40-100: Aluminium AISi10Mg
med stålmuffe (A)

Flange:

DN 40-150: Stainless steel 1.4404 (E)
DN 40-100: Aluminum AISi10Mg
with steel bushing (A)

Ventiloverflade:

Rustfri stål: Elektropoleret mat
Medieberørte dele DN10-50 = Ra 0,5 / DN65-125 = Ra 0,8
Andre på bestilling.
Aluminium: Pulverlakeret 60-80µm RAL9006

Valve finish:

Stainless steel: Electropolished
Wetted parts DN10-50 = Ra 0.5 / DN65-125 = Ra 0.8
Others on request.
Aluminum: Powder coated 60-80µm RAL9006

| DN (mm) | Di (mm) | D1 (mm) | D2 (mm) | D3 (mm) | DF (mm) | nb | d (mm) | TK (mm) | L1 (mm) | L2 (mm) (EE/AE) | L2 (mm) (AA) | G (inch) | H (mm) | ¹ Vol. (l) (ca./approx.) | Vægt weight (kg) (EE) | Vægt weight (kg) (AE) | Vægt weight (kg) (AA) |
|-----------------|------------|------------|------------|------------|------------|----|-----------|------------|------------|-----------------------|--------------------|-------------|-----------|--|-----------------------------|-----------------------------|-----------------------------|
| ² 40 | 40,9 | 90 | 77 | 127,0 | 90 | 4 | 15,7 | 98,6 | 120 | 155 | 155 | G 1/4" | 50 | 0,22 | 3,4 | 2,5 | 2,0 |
| ³ 50 | 52,6 | 110 | 88 | 152,4 | 92 | 4 | 19,1 | 120,7 | 149 | 187 | 187 | G 1/4" | 60 | 0,36 | 5,3 | 3,9 | 3,2 |
| 65 | 62,7 | 139 | 102 | 177,8 | 105 | 4 | 19,1 | 139,7 | 133 | 178 | 174 | G 1/4" | 74 | 0,44 | 5,9 | 5,3 | 3,7 |
| 80 | 78,0 | 173 | 126 | 190,3 | 127 | 4 | 19,1 | 152,4 | 173 | 221 | 217 | G 1/4" | 90 | 0,88 | 8,1 | 7,1 | 4,8 |
| 100 | 102,4 | 203 | 146 | 228,6 | 157 | 8 | 19,1 | 190,5 | 224 | 272 | 268 | G 1/4" | 107 | 1,80 | 13,4 | 9,3 | 7,4 |
| 125 | 121,0 | 252 | 184 | 254,0 | 185 | 8 | 22,5 | 215,9 | 286 | 334 | - | G 1/4" | 130 | 2,7 | 25,0 | - | - |
| 150 | 154,1 | 301 | 257 | 279,4 | 215 | 8 | 22,5 | 241,3 | 356 | 406,8 | - | G 1/4" | 155 | 6,95 | 36,5 | - | - |

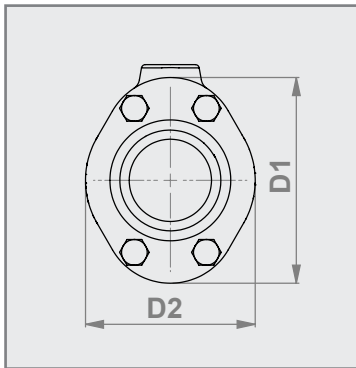
² Antal borer / Number of holes

¹ Volumen = styremediets volumen ved lukket manchet / Volume = Control volume with closed sleeve

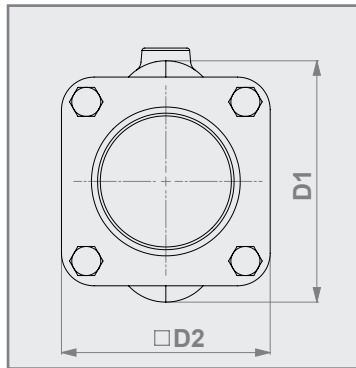
²⁻³ Møtrikkerne (M16) til at samle modflangerne med må ikke roteres mod slangeventilens flanger / Screw nuts (M16) for assembling counter flange are non-rotatable at Pinch Valve body

Pneumatisk slangeventil - Indvendig gevindtilslutning (G/N)

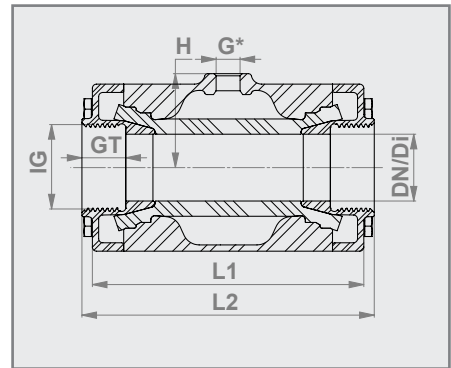
Air operated Pinch Valve - Internal Thread (G/N)



DN10 - DN50



DN65 - DN100



Eksempelvisning / Exmpl. view (DN10 - DN50)

* DIN EN ISO 228 "G"


Tilslutningstype:

Indvendig gevindtilslutning i henhold til
DIN EN ISO 228 "G" eller
ANSI/ASME B1.20.1 "NPT"


Connection type:

Internal Thread Connection according to
DIN EN ISO 228 "G" or
ANSI/ASME B1.20.1 "NPT"


Hus:

DN 10-100: Rustfri stål 1.4408 (E)
DN 20-100: Aluminium AlSi10Mg (A)
DN 10-15: Plastic POM (P) naturfarvet
DN 10-15: Plastic POM (P) ledende 


Body:

DN 10-100: Stainless steel 1.4408 (E)
DN 20-100: Aluminum AlSi10Mg (A)
DN 10-15: Plastic POM (P) natural white
DN 10-15: Plastic POM (P) conductive 

Gevinddæksel:

DN 10-100: Rustfri stål 1.4408 (E)
DN 10-15: Plastic POM (P) naturfarvet
DN 10-15: Plastic POM (P) ledende
for eksplosionstruede områder 

(Internal Thread) Socket ends:

DN 10-100: Stainless steel 1.4404 (E)
DN 20-50: Plastic POM (P) natural white
DN 20-50: Plastic POM (P) conductive
for hazardous areas 

Ventiloverflade:

Rustfri stål: Elektropoleret mat
Medieberørte dele DN10-50 = Ra 0,5 / DN65-100 = Ra 0,8
Andre på bestilling.
Aluminium: Pulverlakeret 60-80µm RAL9006

Valve finish:

Stainless steel: Electropolished
Wetted parts DN10-50 = Ra 0.5 / DN65-100 = Ra 0.8
Others on request.
Aluminum: Powder coated 60-80µm RAL9006

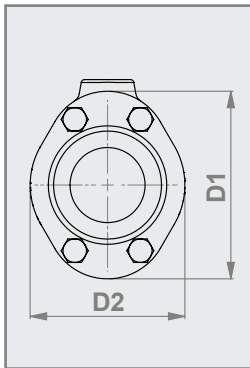
| DN / Di (mm) | D1 (mm) | D2 (mm) | IG (inch) | GT (mm) | L1 (mm) | L2 (mm) | G (inch) | H (mm) | ¹ Vol. (l) (ca./approx) | Vægt weight (kg) (EE) | Vægt weight (kg) (AE) | Vægt weight (kg) (AP) | Vægt weight (kg) (PE) |
|-----------------|------------|------------|--------------------|------------|------------|------------|-------------|-----------|---------------------------------------|-----------------------------|-----------------------------|-----------------------------|-----------------------------|
| 10 | 46 | 35 | G $\frac{3}{8}$ " | 12 | 68 | 80 | G 1/8" | 23 | 0,03 | 0,5 | - | - | 0,2 |
| 15 | 56 | 47 | G $\frac{1}{2}$ " | 15 | 85 | 95 | G 1/8" | 28 | 0,05 | 0,8 | - | - | 0,4 |
| 20 | 62 | 49 | G $\frac{3}{4}$ " | 17 | 93 | 103 | G 1/8" | 32 | 0,07 | 0,9 | 0,5 | 0,4 | - |
| 25 | 72 | 57 | G1" | 20 | 110 | 120 | G 1/8" | 37 | 0,09 | 1,3 | 0,8 | 0,5 | - |
| 32 | 80 | 66 | G1 $\frac{1}{4}$ " | 21 | 130 | 140 | G 1/4" | 45 | 0,13 | 1,7 | 1,1 | 0,7 | - |
| 40 | 90 | 77 | G1 $\frac{1}{2}$ " | 21 | 150 | 160 | G 1/4" | 50 | 0,22 | 2,4 | 1,5 | 0,9 | - |
| 50 | 110 | 88 | G2" | 25 | 175 | 185 | G 1/4" | 60 | 0,36 | 3,6 | 2,2 | 1,6 | - |
| 65 | 139 | 115 | G2 $\frac{1}{2}$ " | 30 | 173 | 200 | G 1/4" | 74 | 0,44 | 4,0 | 3,0 | - | - |
| 80 | 173 | 133 | G3" | 33 | 213 | 230 | G 1/4" | 90 | 0,88 | 5,6 | 4,4 | - | - |
| 100 | 203 | 156 | G4" | 20 | 264 | 280 | G 1/4" | 107 | 1,80 | 11,0 | 6,6 | - | - |

¹ Volumen = styremediets volumen ved lukket manchet / Volume = Control volume with closed sleeve

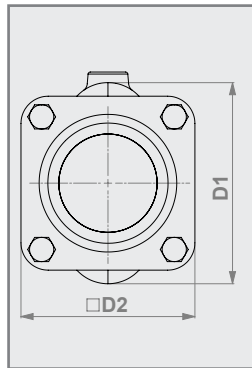
* Alternativt anbefales vores K-variant → monteringslængde = 150 mm / Alternatively available is our K-variant → length = 150mm

Pneumatisk slangeventil - Tri-clamp tilslutning (T)

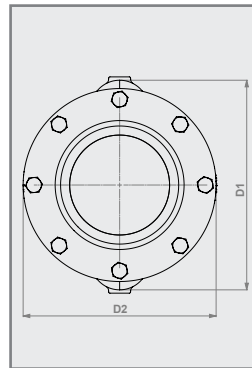
Air operated Pinch Valve - Tri-Clamp connection (T)



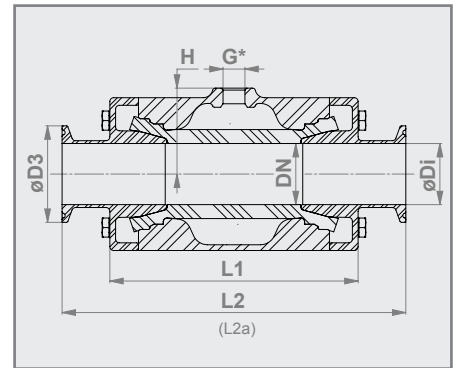
DN10 - DN50



DN65 - DN100



DN125-DN150



Eksempelvisning / Exmpl. view (DN10 - DN50)

* DIN EN ISO 228 "G"


Tilslutningstype:

Tri-clamp i henhold til DIN 32676 række A
DIN 11853-3 (BKS) (L2a) på forespørgsel


Connection type:

Tri-Clamp according to DIN 32676 row A
DIN 11853-3 (BKS) (L2a) on request

Hus:

DN 10-150: Rustfri stål 1.4408 (E)
DN 20-100: Aluminium AlSi10Mg (A)
DN 10-15: Plastic POM (P) naturfarvet
DN 10-15: Plastic POM (P) ledende 

Body:

DN 10-150: Stainless steel 1.4408 (E)
DN 20-100: Aluminum AlSi10Mg (A)
DN 10-15: Plastic POM (P) natural white
DN 10-15: Plastic POM (P) conductive 

Tri-clamp:

DN 10-150: Rustfri stål 1.4404 (E)

Tri-Clamp Connection:

DN 10-150: Stainless steel 1.4404 (E)

Ventil konstruktionslængde:

DN10: I henhold til DIN EN 558 række 27
DN15-50: I henhold til DIN EN 558 række 1
DN65-100: I henhold til DIN EN 558 række 7

Valve face to face length:

DN 10: Acc. to DIN EN 558 row 27
DN 15-50: Acc. to DIN EN 558 row 1
DN 65-100: Acc. to DIN EN 558 row 7

Ventiloverflade:

Rustfri stål: Elektropoleret mat
Medieberørte dele DN10-50 = Ra 0,5 / DN65-125 = Ra 0,8
Andre på bestilling.
Aluminium: Pulverlakeret 60-80µm RAL9006

Valve finish:

Stainless steel: Electropolished
Wetted parts DN10-50 = Ra 0.5 / DN65-125 = Ra 0.8
Others on request.
Aluminum: Powder coated 60-80µm RAL9006

| DN (mm) | Ø Di (mm) | D1 (mm) | D2 (mm) | Ø D3 (mm) | L1 (mm) | L2 (mm) | L2a (mm) | G (inch) | H (mm) | ¹ Vol. (l) (ca./approx.) | Vægt weight (kg) (EE) | Vægt weight (kg) (AE) | Vægt weight (kg) (PE) |
|---------|-----------|---------|---------|-----------|---------|---------|----------|----------|--------|-------------------------------------|-----------------------|-----------------------|-----------------------|
| 10 | 10 | 46 | 35 | 34 | 68 | 115 | 159 | G 1/8" | 23 | 0,03 | 0,5 | - | 0,3 |
| 15 | 16 | 56 | 47 | 34 | 85 | 130 | 184 | G 1/8" | 28 | 0,05 | 0,9 | - | 0,5 |
| 20 | 20 | 62 | 49 | 34 | 93 | 150 | 196 | G 1/8" | 32 | 0,07 | 1,0 | 0,6 | - |
| 25 | 26 | 72 | 57 | 50,50 | 110 | 160 | 209 | G 1/8" | 37 | 0,09 | 1,5 | 1,0 | - |
| 32 | 32 | 80 | 66 | 50,50 | 130 | 180 | 226 | G 1/4" | 45 | 0,13 | 1,9 | 1,3 | - |
| 40 | 38 | 90 | 77 | 50,50 | 150 | 200 | 238 | G 1/4" | 50 | 0,22 | 2,6 | 1,7 | - |
| 50 | 50 | 110 | 88 | 64 | 175 | 230 | 265 | G 1/4" | 60 | 0,36 | 3,9 | 2,5 | - |
| 65 | 66 | 139 | 115 | 91 | 173 | 216 | 269 | G 1/4" | 74 | 0,44 | 4,3 | 3,3 | - |
| 80 | 81 | 173 | 133 | 106 | 213 | 254 | 311 | G 1/4" | 90 | 0,88 | 6,2 | 4,8 | - |
| 100 | 100 | 203 | 156 | 119 | 264 | 305 | 365 | G 1/4" | 107 | 1,80 | 11,4 | 7,3 | - |
| 125 | 120 | 252 | 184 | 155 | 330 | 390 | - | G 1/4" | 130 | 2,7 | 25,7 | - | - |
| 150 | 150 | 301 | 257 | 183 | 406 | 466 | - | G 1/4" | 155 | 6,95 | 36,7 | - | - |

¹ Volumen = styremediets volumen ved lukket manchet / Volume = Control volume with closed sleeve

Ret til tekniske ændringer forbeholdes.

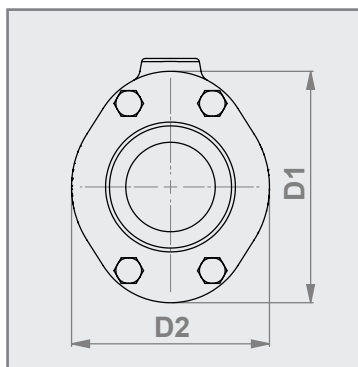
Technical details subject to change without notice.

AKO Armaturen & Separationstechnik GmbH

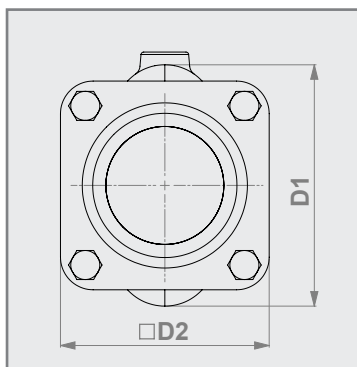
D-65468 Trebur-Astheim • Adam-Opel-Str. 5 • Telefon/Phone: +49 (0) 61 47-9159-0 • Fax: +49 (0) 61 47-9159-59
E-Mail: ako@slangeventiler.dk • Internet: www.slangeventiler.dk / www.pinch-valve.com

Pneumatisk slangeventil - Tri-clamp tilslutning (TA)

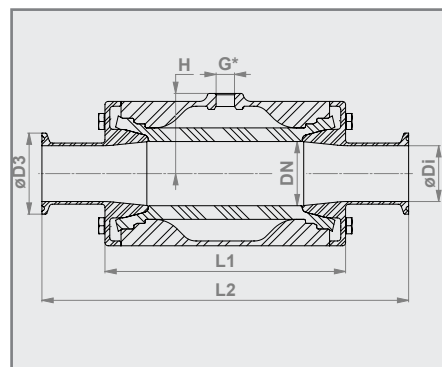
Air operated Pinch Valve - Tri-Clamp connection (TA)



DN10 - DN50



DN65 - DN100



Eksempelvisning / Exmpl. view (DN10 - DN50)

* DIN EN ISO 228 "G"


Tilslutningstype:

Tri-clamp i henhold til DIN 32676 række C


Connection type:

Tri-Clamp according to DIN 32676 row C

Hus:

DN 10-100: Rustfri stål 1.4408 (E)
 DN 20-100: Aluminium AISi10Mg (A)
 DN 10-15: Plastic POM (P) naturfarvet
 DN 10-15: Plastic POM (P) ledende 

Body:

DN 10-100: Stainless steel 1.4408 (E)
 DN 20-100: Aluminum AISi10Mg (A)
 DN 10-15: Plastic POM (P) natural white
 DN 10-15: Plastic POM (P) conductive 

Tri-clamp:

DN 10-100: Rustfri stål 1.4404 (E)

Tri-Clamp Connection:

DN 10-100: Stainless steel 1.4404 (E)

Ventiloverflade:

Rustfri stål: Elektropoleret mat
 Medieberørte dele DN10-50 = Ra 0,5 / DN65-100 = Ra 0,8
 Andre på bestilling.

Valve finish:

Stainless steel: Electropolished
 Wetted parts DN10-50 = Ra 0.5 / DN65-100 = Ra 0.8
 Others on request.

Aluminium: Pulverlakeret 60-80µm RAL9006

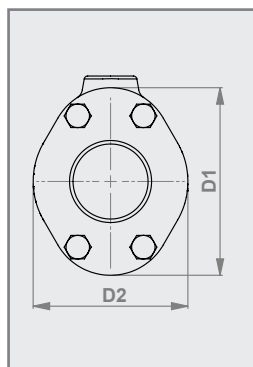
Aluminum: Powder coated 60-80µm RAL9006

| DN (mm) | ø Di (mm) | D1 (mm) | D2 (mm) | ø D3 (mm) | L1 (mm) | L2 (mm) | L2 (inch) | G (inch) | H (mm) | ¹ Vol. (l) (ca./approx.) | Vægt weight (kg) (EE) | Vægt weight (kg) (AE) | Vægt weight (kg) (PE) |
|---------|-----------|---------|---------|-----------|---------|---------|-----------|----------|--------|-------------------------------------|-----------------------|-----------------------|-----------------------|
| 10 | 7,75 | 46 | 35 | 25 | 68 | 114,3 | 4,5 | G 1/8" | 23 | 0,03 | 0,5 | - | 0,3 |
| 15 | 9,4 | 56 | 47 | 25 | 85 | 139,7 | 5,5 | G 1/8" | 28 | 0,05 | 0,8 | - | 0,4 |
| 20 | 15,75 | 62 | 49 | 25 | 93 | 152,4 | 6 | G 1/8" | 32 | 0,07 | 1,0 | 0,6 | - |
| 25 | 22,10 | 72 | 57 | 50,50 | 110 | 152,4 | 6 | G 1/8" | 37 | 0,09 | 1,5 | 1,0 | - |
| 40 | 34,8 | 90 | 77 | 50,50 | 150 | 228,6 | 9 | G 1/4" | 50 | 0,22 | 2,7 | 1,9 | - |
| 50 | 47,50 | 110 | 88 | 64 | 175 | 228,6 | 9 | G 1/4" | 60 | 0,36 | 4,0 | 2,6 | - |
| 65 | 60,20 | 139 | 115 | 77,50 | 173 | 228,6 | 9 | G 1/4" | 74 | 0,44 | 4,6 | 3,9 | - |
| 80 | 72,90 | 173 | 133 | 91 | 213 | 304,8 | 12 | G 1/4" | 90 | 0,88 | 6,4 | 5,3 | - |
| 100 | 97,38 | 203 | 156 | 119 | 264 | 355,6 | 14 | G 1/4" | 107 | 1,80 | 11,7 | 7,7 | - |

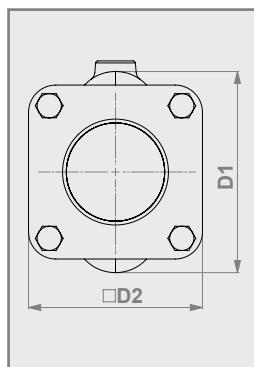
¹ Volumen = styremediets volumen ved lukket manchet / Volume = Control volume with closed sleeve

Pneumatisk slangeventil - Tilsvejsningsender (R)

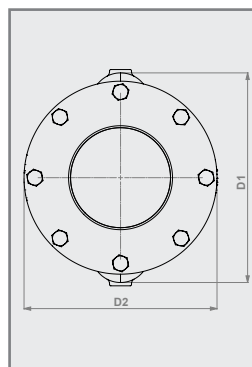
Air operated Pinch Valve - Weld-on ends (R)



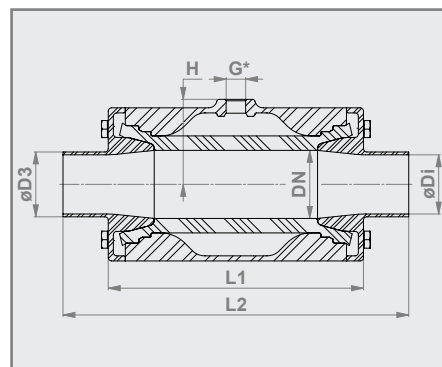
DN10 - DN50



DN65 - DN100



DN125-DN150




Eksempelvisning / Exmpl. view (DN10 - DN50)

* DIN EN ISO 228 °G

Tilslutningstype:

Tilsvejsningsender i henhold til DIN EN 10357 serie 2 (tidligere DIN 11850 række A)


Hus:

DN 10-150: Rustfri stål 1.4408 (E)
 DN 20-100: Aluminium AlSi10Mg (A)
 DN 10-15: Plastic POM (P) naturfarvet
 DN 10-15: Plastic POM (P) ledende 

Connection type:

Weld-on ends according to DIN EN 10357 Series A (formerly DIN 11850 row A)

Body:

DN 10-150: Stainless steel 1.4408 (E)
 DN 20-100: Aluminum AlSi10Mg (A)
 DN 10-15: Plastic POM (P) natural white
 DN 10-15: Plastic POM (P) conductive 

Tilsvejsningsender:

DN 10-150: Rustfri stål 1.4404 (E)

Weld-on ends:

DN 10-150: Stainless steel 1.4404 (E)

Ventil konstruktionslængde:

DN10: I henhold til DIN EN 558 række 27
 DN15-50: I henhold til DIN EN 12982 række 61
 DN65-125: I henhold til DIN EN 558 række 7

Valve face to face length:

DN 10: Acc. to DIN EN 558 row 27
 DN 15-50: Acc. to DIN EN 12982 row 61
 DN 65-125: Acc. to DIN EN 558 row 7

Ventiloverflade:

Rustfri stål: Elektropoleret mat
 Medieberørte dele DN10-50 = Ra 0,5 / DN65-125 = Ra 0,8
 Andre på bestilling.

Valve finish:

Stainless steel: Electropolished
 Wetted parts DN10-50 = Ra 0.5 / DN65-125 = Ra 0.8
 Others on request.

Aluminium: Pulverlakeret 60-80µm RAL9006

Aluminum: Powder coated 60-80µm RAL9006

| DN (mm) | ø Di (mm) | D1 (mm) | D2 (mm) | ø D3 (mm) | L1 (mm) | L2 (mm) | G (inch) | H (mm) | ¹ Vol. (l) (ca./approx.) | Vægt weight (kg) (EE) | Vægt weight (kg) (AE) | Vægt weight (kg) (PE) |
|---------|-----------|---------|---------|-----------|---------|---------|----------|--------|-------------------------------------|-----------------------|-----------------------|-----------------------|
| 10 | 10 | 46 | 35 | 13x1,5 | 68 | 115 | G 1/8" | 23 | 0,03 | 0,5 | - | 0,3 |
| 15 | 16 | 56 | 47 | 19x1,5 | 85 | 140 | G 1/8" | 28 | 0,05 | 0,8 | - | 0,5 |
| 20 | 20 | 62 | 49 | 23x1,5 | 93 | 152 | G 1/8" | 32 | 0,07 | 1,0 | 0,6 | - |
| 25 | 26 | 72 | 57 | 29x1,5 | 110 | 165 | G 1/8" | 37 | 0,09 | 1,4 | 0,9 | - |
| 32 | 32 | 80 | 66 | 35x1,5 | 130 | 178 | G 1/4" | 45 | 0,13 | 1,9 | 1,2 | - |
| 40 | 38 | 90 | 77 | 41x1,5 | 150 | 190 | G 1/4" | 50 | 0,22 | 2,5 | 1,6 | - |
| 50 | 50 | 110 | 88 | 53x1,5 | 175 | 216 | G 1/4" | 60 | 0,36 | 3,8 | 2,5 | - |
| 65 | 66 | 139 | 115 | 70x2 | 173 | 216 | G 1/4" | 74 | 0,44 | 4,2 | 3,2 | - |
| 80 | 81 | 173 | 133 | 85x2 | 213 | 254 | G 1/4" | 90 | 0,88 | 6,0 | 4,6 | - |
| 100 | 100 | 203 | 156 | 104x2 | 264 | 305 | G 1/4" | 107 | 1,80 | 11,3 | 7,2 | - |
| 125 | 125 | 252 | 184 | 129x2 | 330 | 356 | G 1/4" | 130 | 2,70 | 24,6 | - | - |
| 150 | 150 | 301 | 257 | 154x2 | 406 | 436 | G 1/4" | 155 | 6,95 | 35,5 | - | - |

¹ Volumen = styremediets volumen ved lukket manchet / Volume = Control volume with closed sleeve

Ret til tekniske ændringer forbeholdes.

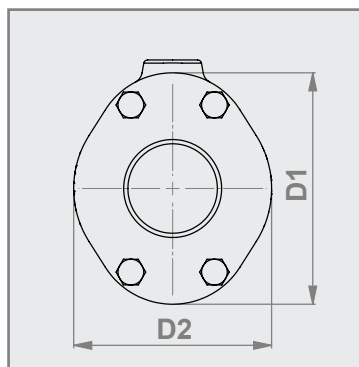
Technical details subject to change without notice.

AKO Armaturen & Separationstechnik GmbH

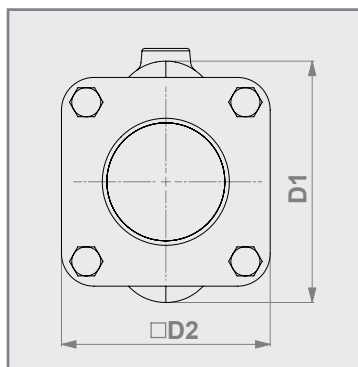
D-65468 Trebur-Astheim • Adam-Opel-Str. 5 • Telefon/Phone: +49 (0) 61 47-9159-0 • Fax: +49 (0) 61 47-9159-59
 E-Mail: ako@slangeventiler.dk • Internet: www.slangeventiler.dk / www.pinch-valve.com

Pneumatisk slangeventil - Tilsvejsningsender (RA)

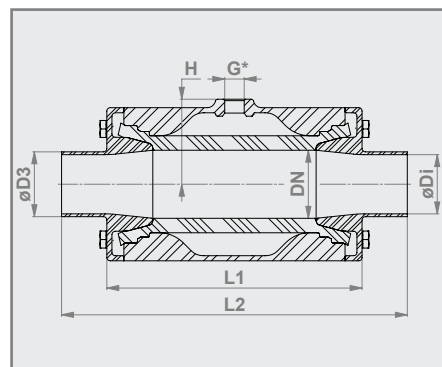
Air operated Pinch Valve - Weld-on ends (RA)



DN10 - DN50



DN65 - DN100



Eksempelvisning / Exmpl. view (DN10 - DN50)

* DIN EN ISO 228 "G"


Tilslutningstype:

Tilsvejsningsender i henhold til ASTM A554


Connection type:

Weld-on ends according to ASTM A554

Hus:

DN 10-100: Rustfri stål 1.4408 (E)
 DN 20-100: Aluminium AlSi10Mg (A)
 DN 10-15: Plastic POM (P) naturfarvet
 DN 10-15: Plastic POM (P) ledende 

Body:

DN 10-100: Stainless steel 1.4408 (E)
 DN 20-100: Aluminum AlSi10Mg (A)
 DN 10-15: Plastic POM (P) natural white
 DN 10-15: Plastic POM (P) conductive 

Tilsvejsningsender:

DN 10-100: Rustfri stål 1.4404 (E)

Weld-on ends:

DN 10-100: Stainless steel 1.4404 (E)

Ventiloverflade:

Rustfri stål: Elektropoleret mat
 Medieberørte dele DN10-50 = Ra 0,5 / DN65-100 = Ra 0,8
 Andre på bestilling.
 Aluminium: Pulverlakeret 60-80µm RAL9006

Valve finish:

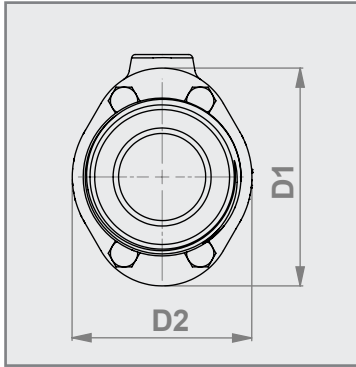
Stainless steel: Electropolished
 Wetted parts DN10-50 = Ra 0.5 / DN65-100 = Ra 0.8
 Others on request.
 Aluminum: Powder coated 60-80µm RAL9006

| DN (mm) | ø Di (mm) | D1 (mm) | D2 (mm) | ø D3 (mm) | L1 (mm) | L2 (mm) | L2 (inch) | G (inch) | H (mm) | ¹ Vol. (l) (ca./approx.) | Vægt weight (kg) (EE) | Vægt weight (kg) (AE) | Vægt weight (kg) (PE) |
|---------|-----------|---------|---------|-----------|---------|---------|-----------|----------|--------|-------------------------------------|-----------------------|-----------------------|-----------------------|
| 10 | 7,75 | 46 | 35 | 9,53 | 68 | 101,6 | 4 | G 1/8" | 23 | 0,03 | 0,5 | - | 0,2 |
| 15 | 9,40 | 56 | 47 | 12,70 | 85 | 127,0 | 5 | G 1/8" | 28 | 0,05 | 0,8 | - | 0,4 |
| 20 | 15,75 | 62 | 49 | 19,05 | 93 | 152,4 | 6 | G 1/8" | 32 | 0,07 | 1,0 | 0,6 | - |
| 25 | 22,10 | 72 | 57 | 25,40 | 110 | 152,4 | 6 | G 1/8" | 37 | 0,09 | 1,5 | 0,9 | - |
| 40 | 34,80 | 90 | 77 | 38,10 | 150 | 203,2 | 8 | G 1/4" | 50 | 0,22 | 2,6 | 1,7 | - |
| 50 | 47,50 | 110 | 88 | 50,80 | 175 | 228,6 | 9 | G 1/4" | 60 | 0,36 | 3,9 | 2,5 | - |
| 65 | 60,20 | 139 | 115 | 63,50 | 173 | 228,6 | 9 | G 1/4" | 74 | 0,44 | 4,3 | 3,5 | - |
| 80 | 72,90 | 173 | 133 | 76,20 | 213 | 279,4 | 11 | G 1/4" | 90 | 0,88 | 6,2 | 5,1 | - |
| 100 | 97,38 | 203 | 156 | 101,60 | 264 | 330,2 | 13 | G 1/4" | 107 | 1,80 | 11,6 | 7,5 | - |

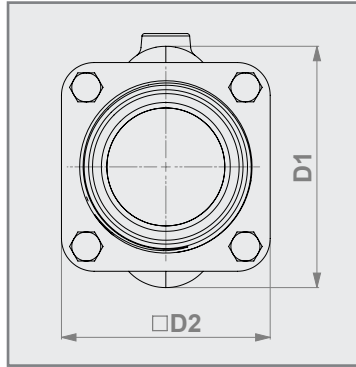
¹ Volumen = styremediets volumen ved lukket manchet / Volume = Control volume with closed sleeve

Pneumatisk slangeventil - Geving studs (M)

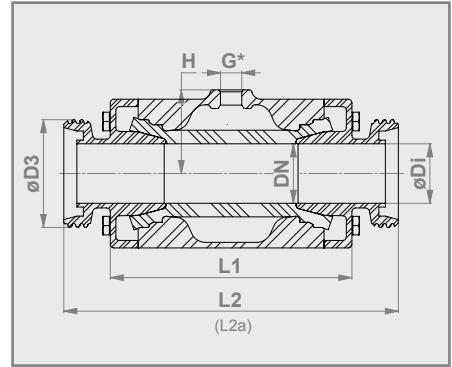
Air operated Pinch Valve - Threaded spigot (M)



DN10 - DN50



DN65 - DN100



Eksempelvisning / Exmpl. view (DN10 - DN50)

* DIN EN ISO 228 "G"

Tilslutningstype:

Geving studs i henhold til DIN 11851


DIN 11853-1 (GS) (L2a) på forespørgsel

Connection type:


Threaded spigot according to DIN 11851

DIN 11853-1 (GS) (L2a) on request

Hus:

DN 10-100: Rustfri stål 1.4408 (E)
 DN 20-100: Aluminium AISi10Mg (A)
 DN 10-15: Plastic POM (P) naturfarvet
 DN 10-15: Plastic POM (P) ledende 

Body:

DN 10-100: Stainless steel 1.4408 (E)
 DN 20-100: Aluminum AISi10Mg (A)
 DN 10-15: Plastic POM (P) natural white
 DN 10-15: Plastic POM (P) conductive 

Geving studs:

DN 10-100: Rustfri stål 1.4404 (E)

Threaded spigot:

DN 10-100: Stainless steel 1.4404 (E)

Ventil konstruktionslængde:

DN10: I henhold til DIN EN 558 række 27
 DN15-50: I henhold til DIN EN 558 række 1

Valve face to face length:

DN 10: Acc. to DIN EN 558 row 27
 DN 15-50: Acc. to DIN EN 558 row 1

Ventiloverflade:

Rustfri stål: Elektropoleret mat
 Medieberørte dele DN10-50 = Ra 0,5 / DN65-100 = Ra 0,8
 Andre på bestilling.

Valve finish:

Stainless steel: Electropolished
 Wetted parts DN10-50 = Ra 0.5 / DN65-100 = Ra 0.8
 Others on request.

Aluminium: Pulverlakeret 60-80µm RAL9006

Aluminum: Powder coated 60-80µm RAL9006

| DN (mm) | ø Di (mm) | D1 (mm) | D2 (mm) | D3 | G (inch) | H (mm) | L1 (mm) | L2 (mm) | L2a (mm) | ¹ Vol. (l) (ca./approx.) | Vægt weight (kg) (EE) | Vægt weight (kg) (AE) | Vægt weight (kg) (PE) |
|---------|-----------|---------|---------|------------|----------|--------|---------|---------|----------|-------------------------------------|-----------------------|-----------------------|-----------------------|
| 10 | 10 | 46 | 35 | Rd28x1/8" | G 1/8" | 23 | 68 | 115 | 153 | 0,03 | 0,5 | - | 0,3 |
| 15 | 16 | 56 | 47 | Rd34x1/8" | G 1/8" | 28 | 85 | 130 | 178 | 0,05 | 0,9 | - | 0,5 |
| 20 | 20 | 62 | 49 | Rd44x1/6" | G 1/8" | 32 | 93 | 150 | 194 | 0,07 | 1,1 | 0,7 | - |
| 25 | 26 | 72 | 57 | Rd52x1/6" | G 1/8" | 37 | 110 | 160 | 217 | 0,09 | 1,6 | 1,1 | - |
| 32 | 32 | 80 | 66 | Rd58x1/6" | G 1/4" | 45 | 130 | 180 | 238 | 0,13 | 2,1 | 1,5 | - |
| 40 | 38 | 90 | 77 | Rd65x1/6" | G 1/4" | 50 | 150 | 200 | 252 | 0,22 | 2,8 | 1,9 | - |
| 50 | 50 | 110 | 88 | Rd78x1/6" | G 1/4" | 60 | 175 | 230 | 278 | 0,36 | 4,2 | 2,9 | - |
| 65 | 66 | 139 | 115 | Rd95x1/6" | G 1/4" | 74 | 173 | 296 | 288 | 0,44 | 4,8 | 4,1 | - |
| 80 | 81 | 173 | 133 | Rd110x1/4" | G 1/4" | 90 | 213 | 344 | 338 | 0,88 | 6,8 | 5,7 | - |
| 100 | 100 | 203 | 156 | Rd130x1/4" | G 1/4" | 107 | 264 | 413 | 405 | 1,80 | 12,6 | 8,5 | - |

¹ Volumen = styremediets volumen ved lukket manchet / Volume = Control volume with closed sleeve