

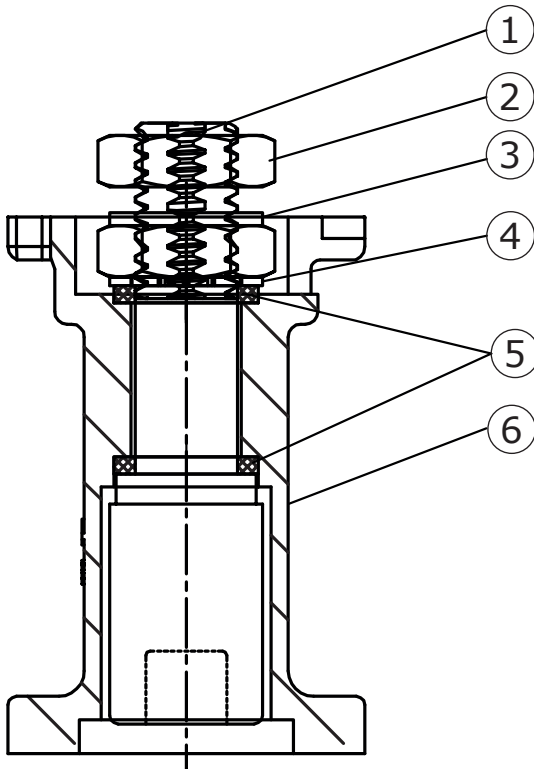
CLOSED STEM EXTENSION

TYPE 5861 FOR MOUNTING ON BALL VALVE



GENERAL

DIMENSION:	ISO TOP:	ISO BOTTOM:
	1) F03/F04	F04
	2) F04/F05	F05
	3) F05/F07	F07
	4) F07/F10	F10
MATERIAL:	ACID-PROOF STAINLESS STEEL	
TOP/BOTTOM FLANGE:	ISO 5211	
STEM:	SQUARE TOP AND BOTTOM	



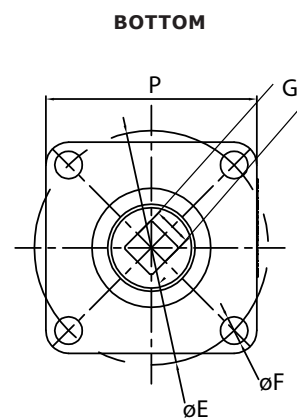
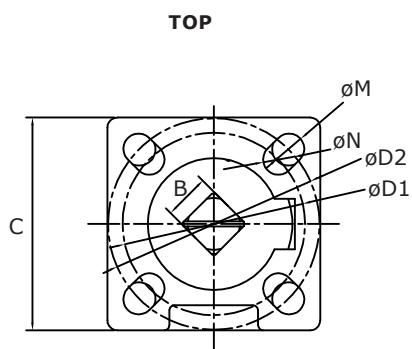
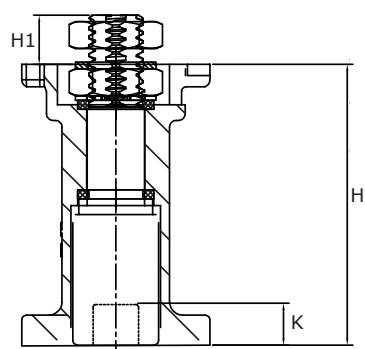
POS	DESCRIPTION	MATERIAL
1	STEM	CF8M
2	STEM NUT	AISI 304
3	WASHER	AISI 304
4	LOCKING DEVICE	AISI 304
5	GLAND PACKING	PTFE
6	BODY	CF8M

DESCRIPTION

- **The closed stem extension** serves as a closed coupling/bracket solution for both actuator and manual operation. Available in four sizes, matching our valve program.
- **The stem extension serves as protection** against heat or cold, as it moves the actuator/handle away from the valve.
- **Insulation becomes easy**, when installing the stem extension because of the closed construction.
- **Standard ISO 5211 top flange**, for easy mounting of actuators.
- **The stem extension is produced in stainless steel (CF8M)** which means great durability in most industrial applications.
- **The stem extension is available with lockable handle on request.** The handle can be locked in open and closed positions. There is also a built-in stop pin at 0° and 90°.

DS-5861-UK-03-2017-REV. A
We reserve the right for changes.

DIMENSIONS



SIZE	STEM			MOUNTING TOP FLANGE						MOUNTING FLANGE BOTTOM				
	[MM]			ISO 5211	[MM]					ISO 5211	[MM]			
	H	H1	K		øD1/øD2	C	øM	øN	□B		øE	P	øF	□G
1	62.7	11.0	13.0	F03/F04	36/42	42	6	6	9	F04	42	42	6	9
2	67.0	11.0	12.8	F04/F05	42/50	50	7	6	11	F05	50	50	7	11
3	86.0	14.0	18.0	F05/F07	50/70	70	9	7	14	F07	70	70	9	14
4	105.0	16.8	19.0	F07/F10	70/102	92	12	10	17	F10	102	92	12	17