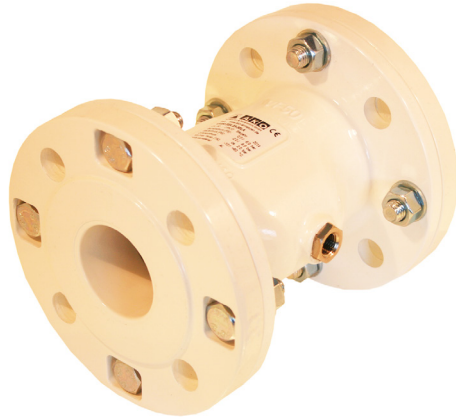


PNEUMATIC PINCH VALVE

TYPE 3800

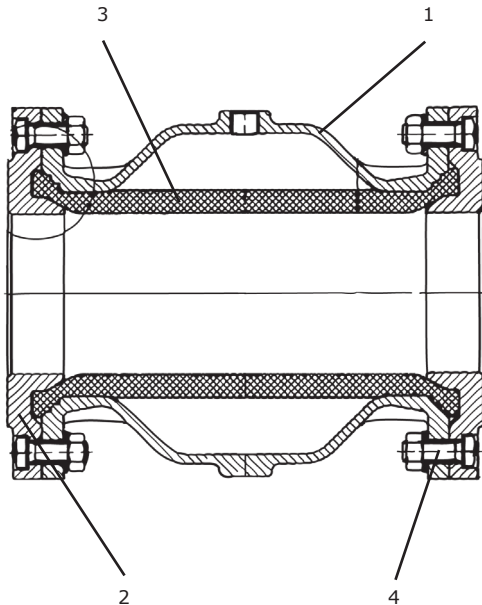


GENERAL

DIMENSION: DN40 - DN200
 PRESSURE: PN10
 MAX. MEDIA PRESSURE: 2 - 6 BAR (DEPENDING ON SIZE)
 CONNECTION: FLANGES
 SURFACE: POWDER COATED MIN. 80µ
 MATERIAL: ALUMINUM
 TEMPERATURE: -10°C - +80°C

OPTIONS

DIMENSION: DN250 - DN300
 MATERIAL: STAINLESS STEEL OR PLASTIC
 TEMPERATURE: -10°C - +130°C
 CONNECTION: THREAD
 FLANGE MATERIAL: STAINLESS STEEL OR ALUMINUM WITH BUSHING IN STEEL OR STAINLESS STEEL FLANGE SLEEVE
 SLEEVE: VARIOUS MATERIALS (SEE PAGE 2)
 SERVICE: MOUNTING PASTE DN 40 - DN 250
 MOUNTING TOOLS DN 100 - DN 250
 APPROVALS: FDA, EU1935, ATEX, EHEDG
 ACCESSORIES: QUICK EXHAUST, VISUAL PRESSURE INDICATOR, PROPORTIONAL REGULATOR (4-20 mA), AKOVAC, FAIL SAFE, PRESSURE SWITCH



POS	DESCRIPTION	MATERIAL
1	BODY	ALUMINUM
2	FLANGE END	ALUMINUM
3	SLEEVE	NATURAL RUBBER
4	BOLT*	ZINK COATED STEEL 8.8

* OPTION: STAINLESS STEEL

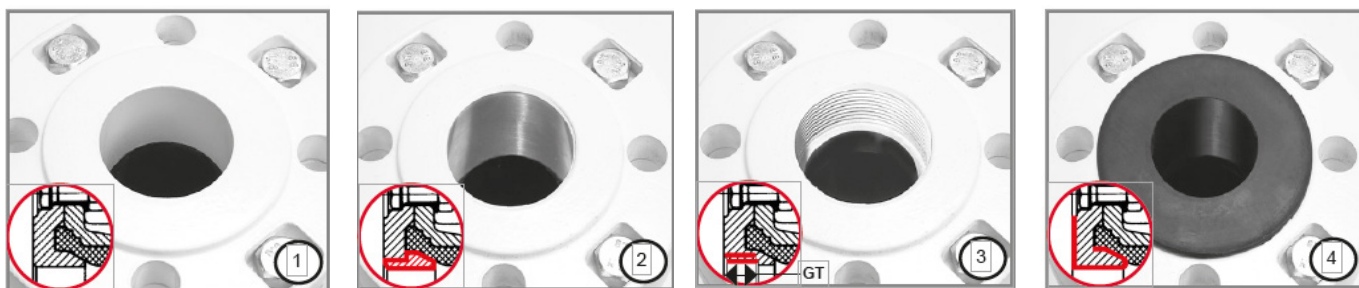


DESCRIPTION

- **Flexible sleeves** makes this type of valve very suitable for media containing large particles, and media that is abrasive or viscous.
- **If the solenoid valve is not mounted directly on the valve,** it is recommended to use quick exhaust.
- **Accessories:** Visual pressure indicator, to show the position of the valve. AKOVAC ensure full opening when media pressure is low and vacuum installation, proportional regulator enables rough regulation of flow, Fail safe is used in case of loss of compressed air so that the valve remains in the closed position and pressure switch which gives position feedback/monitoring of supply. (Digital/analogue)
- **Simple construction** ensures high operational reliability and a long service life.
- **Compact design** enables installation where space is limited.
- **Oval body** allows for lower air consumption than for round bodies.
- **Easy to maintain,** by replacing the sleeve.
- **Full bore** ensures minimal pressure loss.

DS-3800-UK-08-2024-REV. D
We reserve the right for changes.

CONNECTION



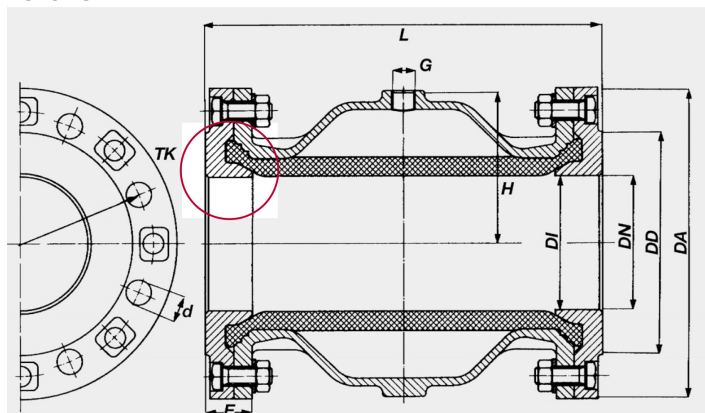
1) Standard aluminum

2) Stainless steel/steel bushing

3) Internal thread

4) Flange sleeve

DIMENSIONS



DN [MM]	DI [MM]	DA [MM]	DD [MM]	D [MM]	SCREWS [AMOUNT]	TK [MM]	L [MM]	G [INCH]	H [MM]	E [MM]	WEIGHT ¹ [KG]	VOLUME ² [LITERS]	MAX. WORK. PRESSURE [BAR]	INTERNAL THREAD	GT DEPTH [MM]
40	40	150	88	18	4	110	155	G 1/4"	56	28	2.9	0.20	6	G 1 1/2"	19
50	50	165	102	18	4	125	183	G 1/4"	65	30	3.7	0.30	6	G 2"	24
65	65	185	122	18	4	145	183	G 1/4"	81	28	4.3	0.45	6	G 2 1/2"	22
80	80	200	138	18	8	160	228	G 1/4"	95	31	5.6	0.95	6	G 3"	22
100	100	220	158	18	8	180	280	G 1/4"	112	35	8.4	1.70	6	G 4"	20
125	118	250	184	18	8	210	348	G 1/4"	136	40	12.0	3.50	6	-	-
150	145	285	212	22	8	240	418	G 1/4"	160	43	17.0	7.00	6	-	-
200	190	340	268	22	8	295	558	G 3/8"	206	60	35.0	15.50	4	-	-
250	250	395	320	22	12	350	680	G 1/2"	266	67	56.0	30.00	3	-	-
300	300	445	370	22	12	400	820	G 1/2"	306	70	86.0	49.00	3	-	-

¹ Aluminum flanges.

² approx. air consumption per activation in liters.

MATERIALS	SLEEVE MATERIALS		
	DRY TEMPERATURE [°C]		DIFFERENTIAL PRESSURE [BAR]
	MAX.	MIN.	
NEOPRENE	80	- 10	2.0
NATURAL RUBBER FOOD QUALITY	80	- 10	2.0
NATURAL RUBBER ANTI-ABRASIVE	80	- 10	2.0
NATURAL RUBBER HIGH TEMPERATURE	90	- 10	3.0
EPDM	120	- 10	2.5
EPDM FOOD - BLACK	120	- 10	2.5
EPDM FOOD - PALE	90 / 120*	- 10	2.5
FPM	120	- 10	4.0
SILICONE	130	- 10	3.0
NBR	80	- 10	2.0
NBR FOOD - BLACK	80	- 10	2.0
NBR FOOD - PALE	80	- 10	2.0
BUTYLE RUBBER	80	- 10	2.0
HYPALONE	80	- 10	2.0
SLEEVE MATERIALS FOR ATEX VALVES			
NBR FOOD - PALE	80	- 10	2.0
BUTYLE RUBBER	120	- 10	2.5
HYPALONE	80	- 10	2.0

Note: Air supply must be between 2.0 and 2.5 bar greater than media pressure, not exceeding 8 bar.

The a.m. temperatures are guidelines and may vary depending on medium (dry/wet) and application.

* DN40-50 = 120°C,
DN65-300 = 90°C