

DVC 3-pcs ball valve



Type 1251

Type 1351

Type 1211

Type 1311

Accessories for pneumatic actuator



Inductive limit switch



Mechanical limit switch



Wireless limit switch



3/2 or 5/2 way solenoid valve



IP66 solenoid valve

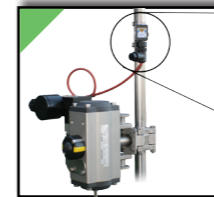


Speed control valve

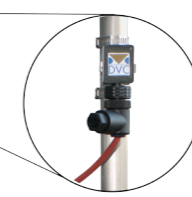


Electropneumatic positioner

Electronic stem trap



Stem trap control valve



Manual operation



Inductive limit switch



Mechanical limit switch



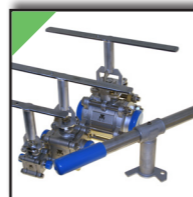
Handle DN10-DN50



Handle DN65-DN100



Hand control valve



Stem extension

Electric actuator 40...6000Nm



24VDC/AC, 230VAC, 400VAC



4-20mA positioner

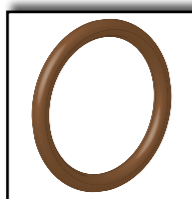


Battery back-up

Pneumatic actuator 18...13.000Nm



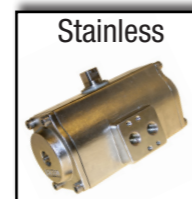
NBR
Max. 80°C



FPM
Max. 150°C



Aluminum



Stainless



PTFE coated

Air/air (DA) - air/spring (SR)

Coupling/bracket solutions



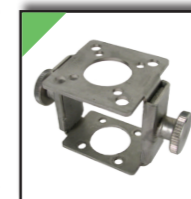
Coupling



Zero backlash coupling



Bracket



Quick bracket



Closed stem extension

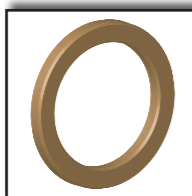


Closed stem extension with stem seal

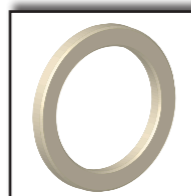
Seat materials



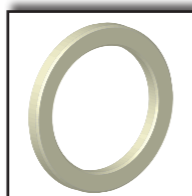
Cavity filler



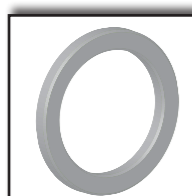
Delrin



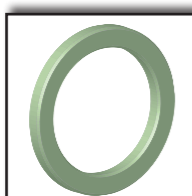
PTFE



RPTFE



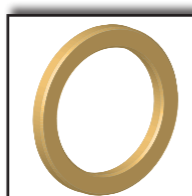
PTFE+50%SS



MG1241



PTFE + 25%C



PEEK

PN125
3000psi

ATEX

CE

EU1935-2003 / FDA

TripleSeal™

scan product info

Firesafe

SIL3

Can be welded directly without dismantling.
See video at www.dvcas.dk

Connections



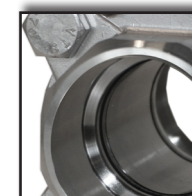
Thread



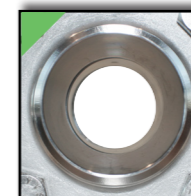
ISO BW



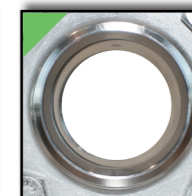
SMS BW



SW



Reduced bore

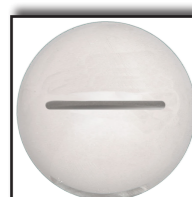


Full bore



ISO-top for actuator mounting

Ball with different trims



1.3mm slot



15° V-port



30° V-port



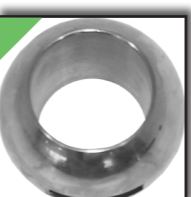
60° V-port



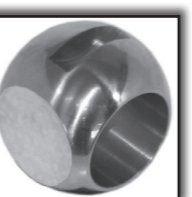
90° V-port



Noise reduction



Round



Flattend ball

Materials



Steel



Stainless



Duplex



Titanium

DVC standard stock items.

Others on request.