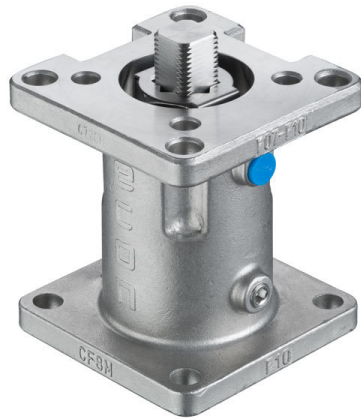


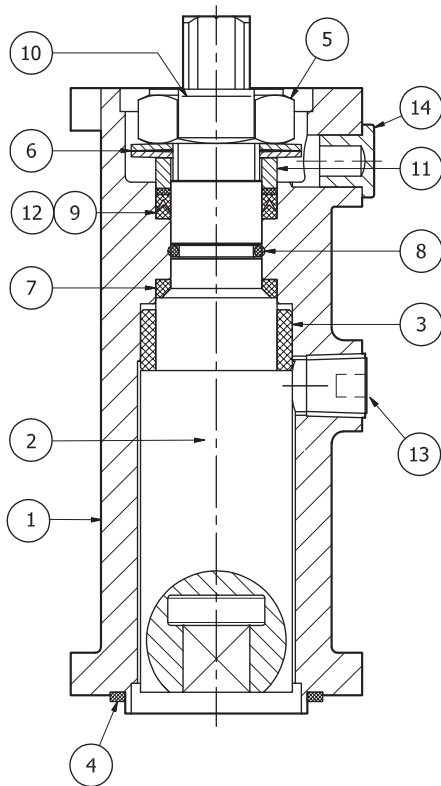
CLOSED STEM EXTENSION WITH PACKING

TYPE E7412 FOR MOUNTING ON BALL VALVE: TYPE 1351



GENERAL

ISO TOP FLANGE:	SIZE 1 - F03 / F04 SIZE 2 - F04 / F05 SIZE 3 - F07 SIZE 4 - F07 / F10 SIZE 5 - F10
MATERIAL:	STAINLESS STEEL

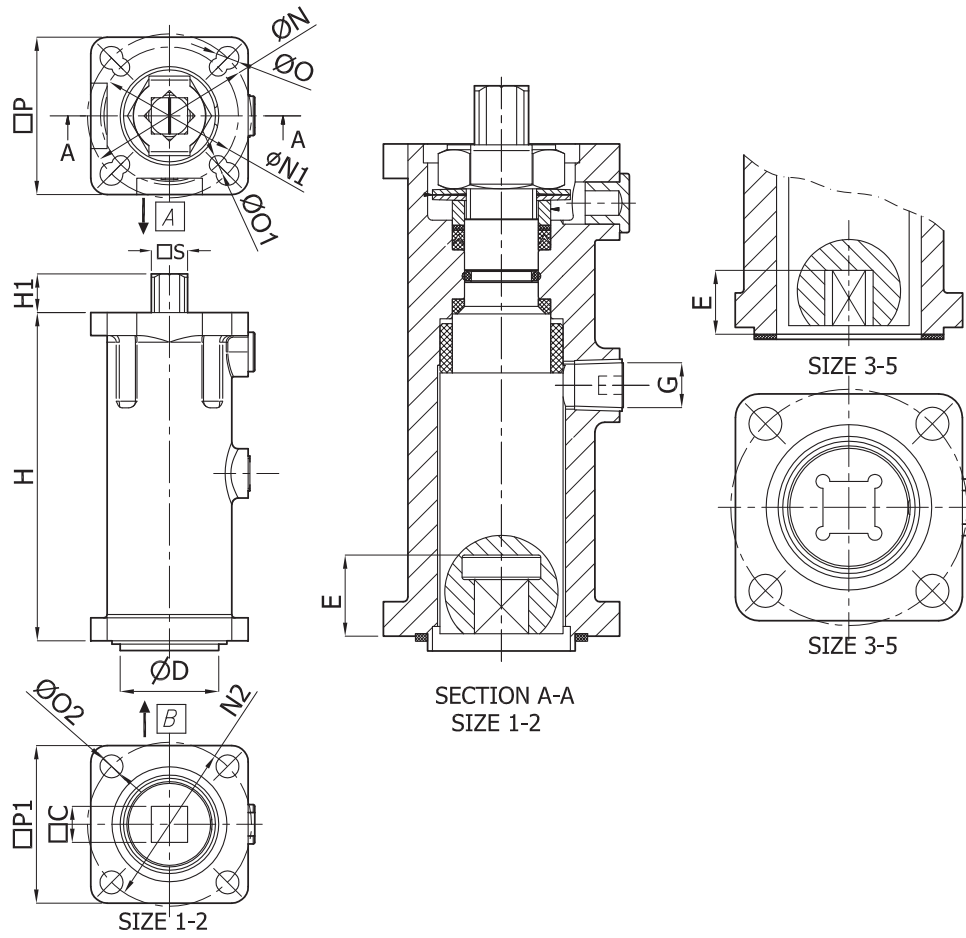


POS	DESCRIPTION	MATERIALS
1	BODY	STAINLESS STEEL CF8M
2	STEM	STAINLESS STEEL AISI 316
3	BUSHING	PTFE WITH 50% SS
4	GASKET	PTFE WITH 50% SS
5	HEX JAM NUT	ASTM A194 GR.8
6	BELLEVILLE WASHER	STAINLESS STEEL AISI 301
7	THRUST WASHER	TF4215
8	O-RING	VITON 70 GLT
9	STEM SEAL	PTFE WITH 15% GRAPHITE
10	LOCKING PLATE	STAINLESS STEEL AISI 304
11	GLAND	STAINLESS STEEL AISI 304
12	WASHER	PTFE WITH 50% SS
13	SOCKET SCREW	A2
14	INSPECTION PORT	STAINLESS STEEL CF8M

DESCRIPTION

- **A closed stem extension has three functions:**
 - 1) Assembling unit between ball valve and actuator.
 - 2) Stem extension
 - 3) Additional gland for particularly demanding tasks.
- **Extra security leak to the atmosphere.** Along with ball valve you get two full maintenance glands with disc springs, V-rings and Viton O-ring.
- **No leaks in insulation.** The stem extension is tight against the ball valve and the isolation of the unit avoids leakage in the insulation at the risk of corrosion and spontaneous combustion.
- **ISO 5211 mounting flange** with recess centers stem extension device and actuator to avoid creating a dynamic load on the stem/seal.
- **Possibility of direct mounting of actuator** without the use of brackets and coupling, and with inspection window during the mounting flange to indicate the position and rotation.
- The stem extension has a antistatic devise with a socket screw.
- Inspection port can be blocked with a screw.

VALVE DATA FOR BALL VALVE TYPE 1211 AND 1311



DIMENSION				MOUNTING UNIT		ISO MOUNTING FLANGE TOP					MOUNTING FLANGE BOTTOM			STEM				WEIGHT	
REDUCE BORE	FULL BORE	DN	IN	[MM]		ISO 5211	[MM]				ISO 5211	[MM]			TOP [MM]		BOTTOM [MM]		KG
				H	G		ØN1/ØN	P	Ø0	Ø01		ØN2	P1	Ø02	H1	S	C	E	
-	-	DN08	1/4"	100	1/8"	F03/F04	36/42	42	5.5	5.5	F04	42	42	5.5	9.6	9	9	14.5	0.575
-	-	DN10	3/8"	100	1/8"	F03/F04	36/42	42	5.5	5.5	F04	42	42	5.5	9.6	9	9	14.5	0.575
DN20	3/4"	DN15	1/2"	100	1/8"	F03/F04	36/42	42	5.5	5.5	F04	42	42	5.5	9.6	9	9	14.5	0.575
DN25	1"	DN20	3/4"	100	1/8"	F03/F04	36/42	42	5.5	5.5	F04	42	42	5.5	9.6	9	9	14.5	0.575
DN32	1 1/4"	DN25	1"	100	1/8"	F04/F05	42/50	48	7.0	5.5	F05	50	48	7.0	11.8	11	11	16.5	0.912
DN40	1 1/2"	DN32	1 1/4"	100	1/8"	F04/F05	42/50	48	7.0	5.5	F05	50	48	7.0	11.8	11	11	16.5	0.912
DN50	2"	DN40	1 1/2"	100	1/8"	F07	70	66	9.0	-	F07	70	66	9.0	15.0	14	14	16.5	1.828
DN65	2 1/2"	DN50	2"	100	1/8"	F07	70	66	9.0	-	F07	70	66	9.0	15.0	14	14	16.5	1.828
DN80	3"	DN65	2 1/2"	100	1/8"	F07/F10	70/102	92	11.0	9.0	F10	102	92	11.0	18.0	17	17	20.0	2.721
DN100	4"	DN80	3"	100	1/8"	F07/F10	70/102	92	11.0	9.0	F10	102	92	11.0	18.0	17	17	20.0	2.721
-	-	DN100	4"	100	1/8"	F10	102	92	11.0	-	F10	102	92	11.0	22.5	22	22	24.5	3.597